

**DRAWING INDEX**

- FA0.0 COVER SHEET  
DEVICE MOUNTING NOTES & DETAILS
- FA1.1 BUILDING E SUITE 530 - SYSTEM LAYOUT  
DEVICE TERMINATION NOTES & DETAILS  
SYSTEM RISER DIAGRAM

**FIRE ALARM SYSTEM LEGEND**

- FAA FIRE ALARM ANNUCIATOR PANEL
- F ADDRESSABLE PULL STATION
- AD ADDRESSABLE SMOKE DETECTOR, PHOTOELECTRIC
- ADU ADDRESSABLE DUCT SMOKE DETECTOR
- ADM ADDRESSABLE DUAL MONITOR MODULE
- ACM ADDRESSABLE CONTROL MODULE
- ARM ADDRESSABLE RELAY MODULE
- CRS CONVENTIONAL REMOTE RELAY FOR HIGH VOLTAGE CURRENT APPLICATIONS
- RTS REMOTE TEST STATION
- HWS HORN STROBE, WALL MOUNTED
- HCS HORN STROBE, CEILING MOUNTED
- SWS STROBE ONLY, WALL MOUNTED
- WF FLOW SWITCH
- VS VALVE SUPERVISORY, TAMPER SWITCH
- JB JUNCTION BOX
- EOL EOL
- 120VAC 120VAC CONNECTION (BY OTHERS)
- CD CANDELA RATING
- C CEILING MOUNT
- WP WEATHER PROOF

**GENERAL EQUIPMENT NOTES**

1. BREAK WIRE RUNS TO MAINTAIN CIRCUIT SUPERVISION
  - 1.1. DO NOT LOOP AROUND TERMINALS
2. ALL VISUAL ALARM INDICATING DEVICES SHALL BE MOUNTED BETWEEN 80" AND 96" FROM THE FLOOR
3. ALL MANUAL PULL STATIONS SHALL BE MOUNTED 46" FROM THE FLOOR TO THE CENTER OF THE PULL STATION
4. ALL EQUIPMENT SHALL BE SUPPLIED BY GREAT LAKES BUILDING SYSTEMS INC, UNLESS OTHERWISE NOTED

**DEVICE ADDRESSING NOTES**

1. INSTALLING CONTRACTOR TO BE RESPONSIBLE FOR ADDRESSING ALL DEVICES DURING SYSTEM INSTALLATION ACCORDING TO DRAWING PACKAGE IF PROVIDED. FAILURE TO DO SO, WILL REQUIRE THE REMOVAL, ADDRESSING & RE-INSTALLATION OF ALL ADDRESSABLE DEVICES.

**T-TAPPING WIRING NOTES**

1. "T-TAPPING" IS PERMITTED TO BE USED WITH ADDRESSABLE DEVICES ON ANY ADDRESSABLE CIRCUIT ONLY
  - 1.1. "T-TAPPING" IS ALSO PERMITTED TO BE USED WITH 24VDC (RESETTABLE & NON-RESETTABLE) POWER CIRCUITS
2. "T-TAPPING" IS NOT PERMITTED TO BE USED WITH CONVENTIONAL DEVICES NOR ANY CORRESPONDING CIRCUITS
  - 2.1. "T-TAPPING" IS ALSO NOT PERMITTED TO BE USED WITH NOTIFICATION APPLIANCE CIRCUITS OR "NAC CIRCUITS"

**WIRE SPECIFICATIONS**

1. WIRING TO MEET IFC (2015), IBC (2015), LOCAL CODES, & LOCAL AHJ APPROVAL
2. ALL 120Vac WIRE TO BE RUN IN SEPARATE CONDUIT, NOT WITH LOW VOLTAGE WIRING
3. WIRE SIZE INDICATED ARE MANUFACTURERS RECOMMENDED MINIMUM SIZE, MINIMUM SPECIFIED WIRE GAUGE BY CALCULATION OR PROJECT SPECIFICATIONS

**WIRE CLASSIFICATION**

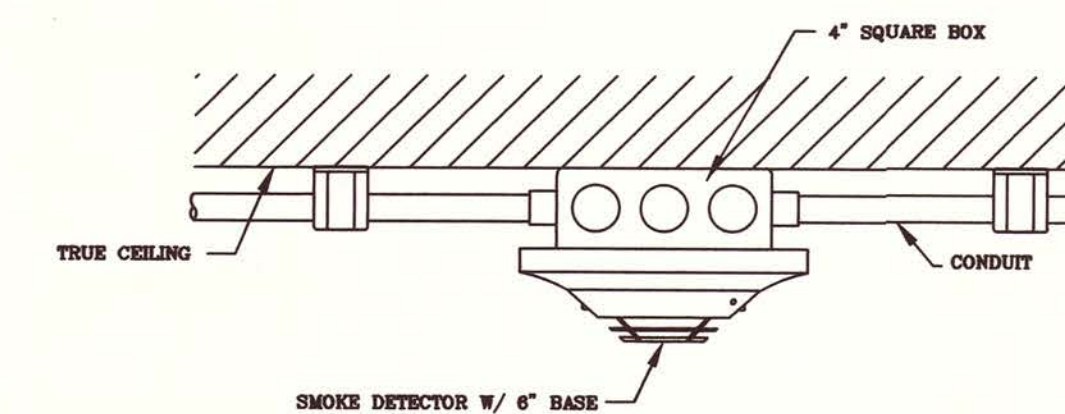
1. OCCUPANCY CLASSIFICATION: INTERNATIONAL BUILDING CODE (2020) 309.1 OCCUPANCY GROUP [M]: DEPARTMENT STORES
2. CONSTRUCTION TYPE: INTERNATIONAL BUILDING CODE (2020), 602.3 TYPE III: EXTERIOR WALLS ARE OF NON-COMBUSTIBLE MATERIALS, INTERIOR BUILDING ELEMENTS ARE OF MATERIALS PERMITTED BY CODE
3. FIRE ALARM SYSTEM TO MEET IFC (2020), CHAPTER 9: FIRE PROTECTION SYSTEMS
4. CIRCUIT CLASSIFICATION:
  - 4.1. SIGNAL LINE CIRCUITS (SLC) - CLASS B
  - 4.2. NOTIFICATION CIRCUITS (NAC) - CLASS B
  - 4.3. INITIATING CIRCUITS (INC) - CLASS B
  - 4.4. ANCILLARY CIRCUITS (AUX) - CLASS B

**DEVICE MOUNTING HEIGHTS**

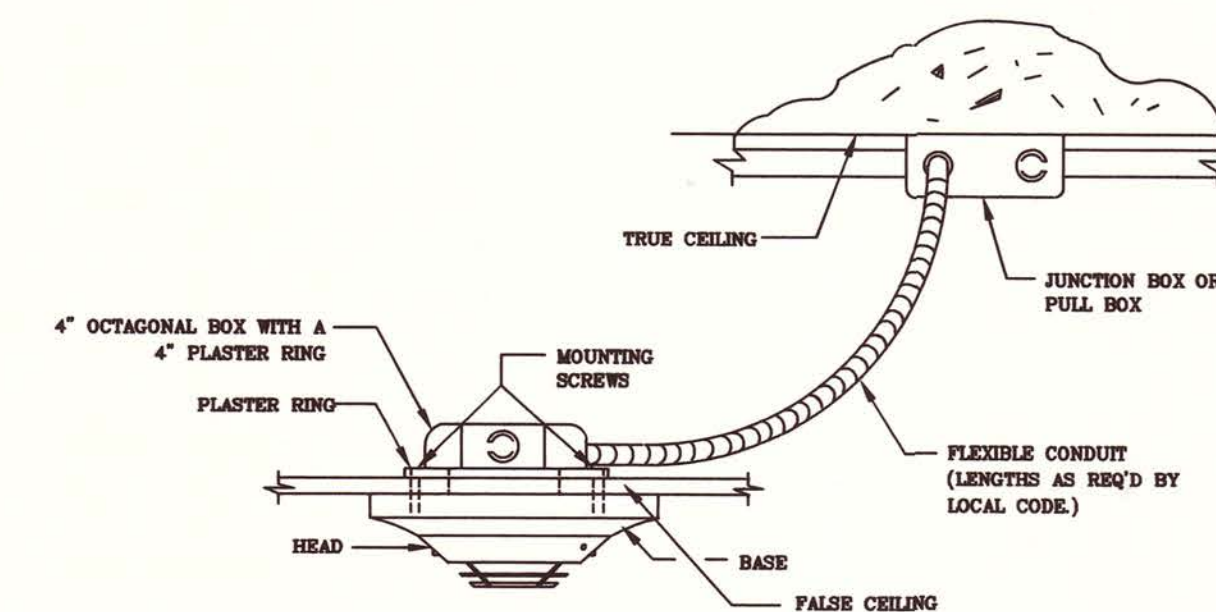
- PULL STATION
  - BOTTOM OF PULL STATION CANNOT BE LESS THAN 42" IN HEIGHT
  - TOP OF PULL STATION CANNOT EXCEED MORE THAN 48" IN HEIGHT
- STROBE
  - BOTTOM OF DEVICE CANNOT BE LESS THAN 80" IN HEIGHT
  - TOP OF DEVICE CANNOT EXCEED MORE THAN 96" IN HEIGHT
- HORN STROBE
  - BOTTOM OF DEVICE CANNOT BE LESS THAN 80" IN HEIGHT
  - TOP OF DEVICE CANNOT BE MORE THAN 96" IN HEIGHT
- SMOKE DETECTORS
  - DEVICE MUST BE AT LEAST 3 FEET FROM ANY AIR VENTS, DUCT WORK OR DIFFUSERS
  - DEVICE CANNOT BE LOCATED WITHIN 4" OF A SIDE WALL IF MOUNTED ON SIDE WALL, IT MUST BE MOUNTED BETWEEN 4" TO 12" FROM CEILING
  - FOR CEILINGS LESS THAN 12" AND STRUCTURAL BEAMS LESS THAN 12" DEEP, DETECTORS ARE PERMITTED TO BE MOUNTED ON THE BOTTOM OF BEAM
- DUCT SMOKE DETECTORS
  - NUMBER OF DUCT SMOKE DETECTORS REQUIRED IS DEPENDENT UPON THE MEASURE OF AIR VELOCITY OF THE AIR HANDLING UNIT:
    - [2000cfm TO 15000cfm] - [1] DUCT SMOKE DETECTOR IS REQUIRED TO BE INSTALLED ON THE AIR SUPPLY SIDE, TO BE MOUNTED DOWNSTREAM OF AIR FILTERS (IF APPLICABLE) AND AHEAD OF ANY BRANCH CONNECTIONS IN THE AIR SUPPLY SYSTEM
    - [ABOVE 15000cfm] - [2] DUCT SMOKE DETECTORS ARE REQUIRED TO BE INSTALLED ON BOTH THE AIR SUPPLY SIDE AS WELL AS THE AIR RETURN SIDE, TO BE MOUNTED UPSTREAM OF AIR FILTERS (IF APPLICABLE) AND AHEAD OF ANY BRANCH CONNECTIONS IN THE AIR SUPPLY/RETURN SYSTEM IF NEEDED
- REMOTE TEST STATION
  - REQUIRED IF ASSOCIATED DETECTOR IS LOCATED 10' A.F.F.
  - SHALL BE VISIBLY LOCATED BETWEEN 48"-82" A.F.F.
  - SHALL BE INSTALLED BELOW DROP CEILING
- DETECTION AND CONTROL PANELS
  - TOP OF PANEL TO BE MOUNTED AT 66" IN HEIGHT FROM FINISHED FLOOR

**WIRING LEGEND**

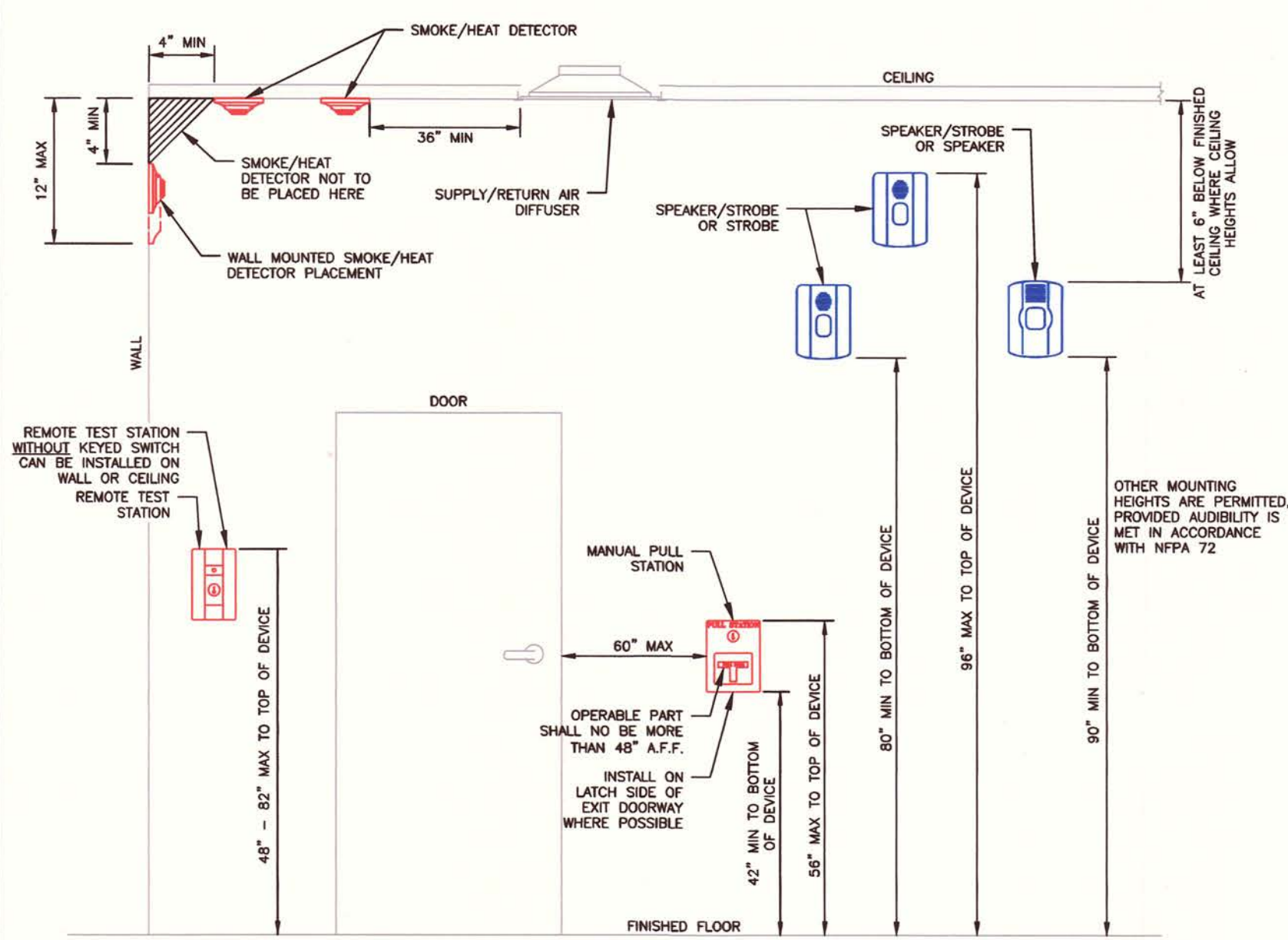
- |   |                                 |   |
|---|---------------------------------|---|
| A | SIGNALING LINE CIRCUIT (SLC)    | 2/C-18 AWG CABLE TWIST, RED WITH YELLOW STRIPE                                      |
| B | AUDIBLE/VISUAL NOTIFICATION CKT | 2/C-16 AWG CABLE, RED WITH BLUE STRIPE  |
| C | 24VDC RESETTABLE POWER          | 2/C-18 AWG CABLE, RED NO STRIPE   |
| D | 24VDC NON-RESETTABLE POWER      | 2/C-16 AWG CABLE, RED WITH WHITE STRIPE   |
| E | CONVENTIONAL DEVICE TIE-IN      | 2/C-18 AWG CABLE, RED   |
| F | NETWORK CABLE                   | CAT6  |
| G | REMOTE TEST STATION CIRCUIT     | 4/C-18 AWG CABLE, RED   |
| H | ANNUNCIATOR CIRCUIT             | (1) 2/C-16 AWG CABLE (POWER)<br>(2) 2/C-18 AWG CABLE, TWIST, SHIELD (DATA & RETURN) |



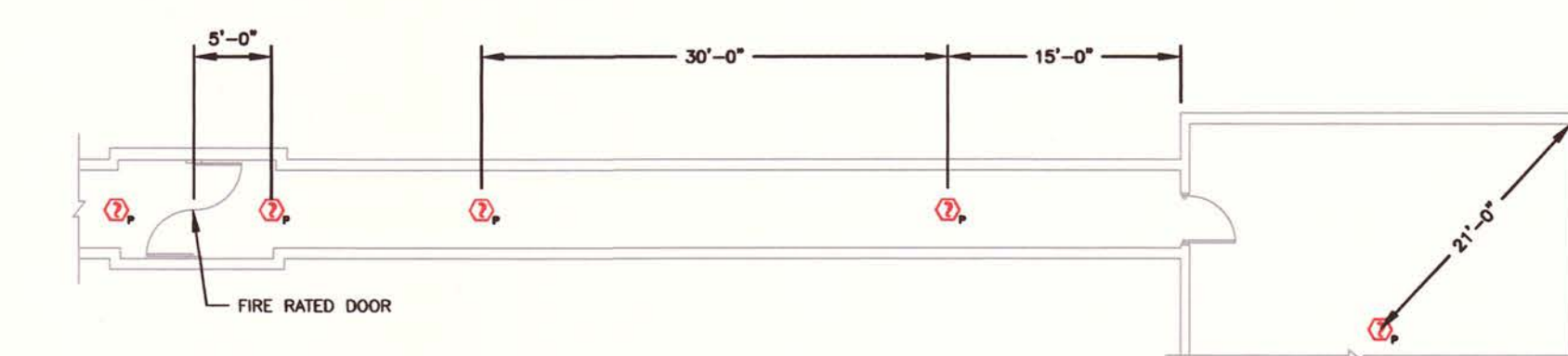
**TYPICAL SMOKE DETECTOR SURFACE MOUNT DETAIL**  
FIRE ALARM SYSTEM  
NOT TO SCALE



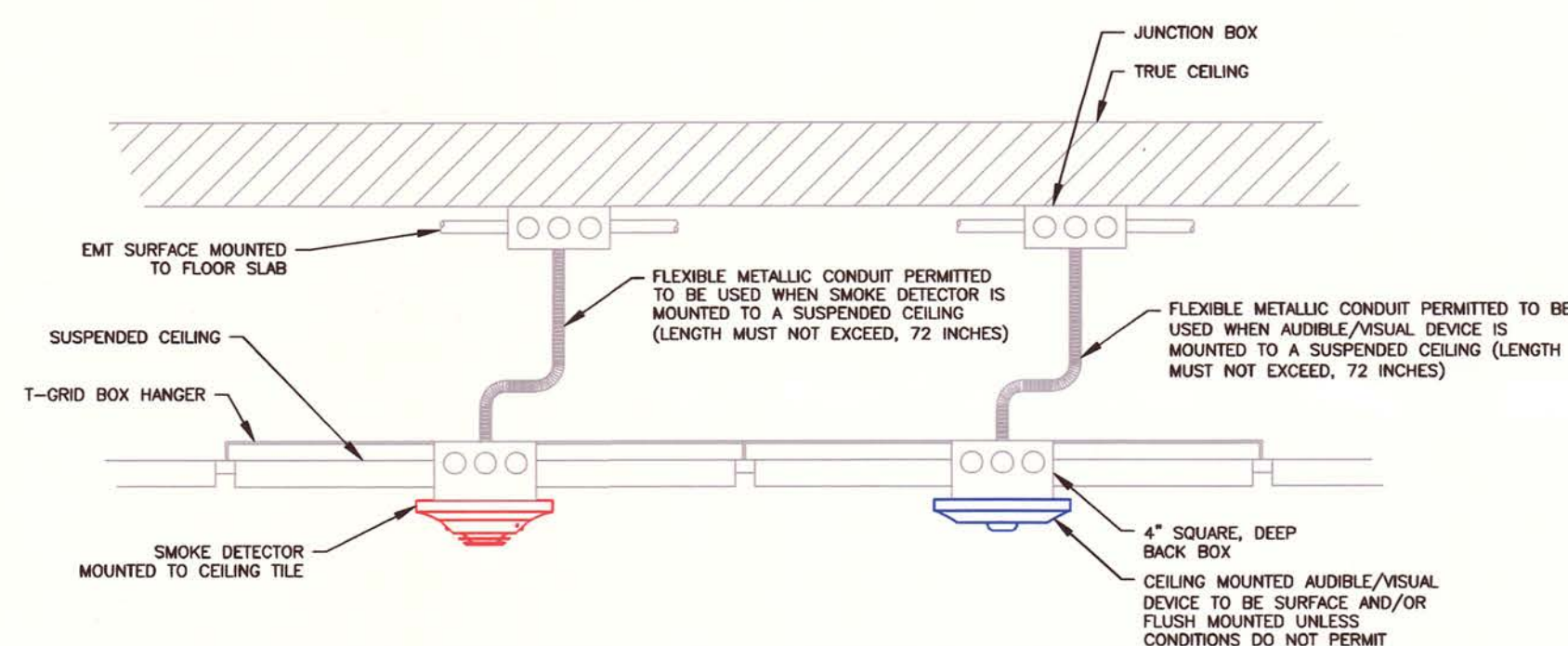
**TYPICAL SMOKE DETECTOR DROP CEILING MOUNT DETAIL**  
FIRE ALARM SYSTEM  
NOT TO SCALE



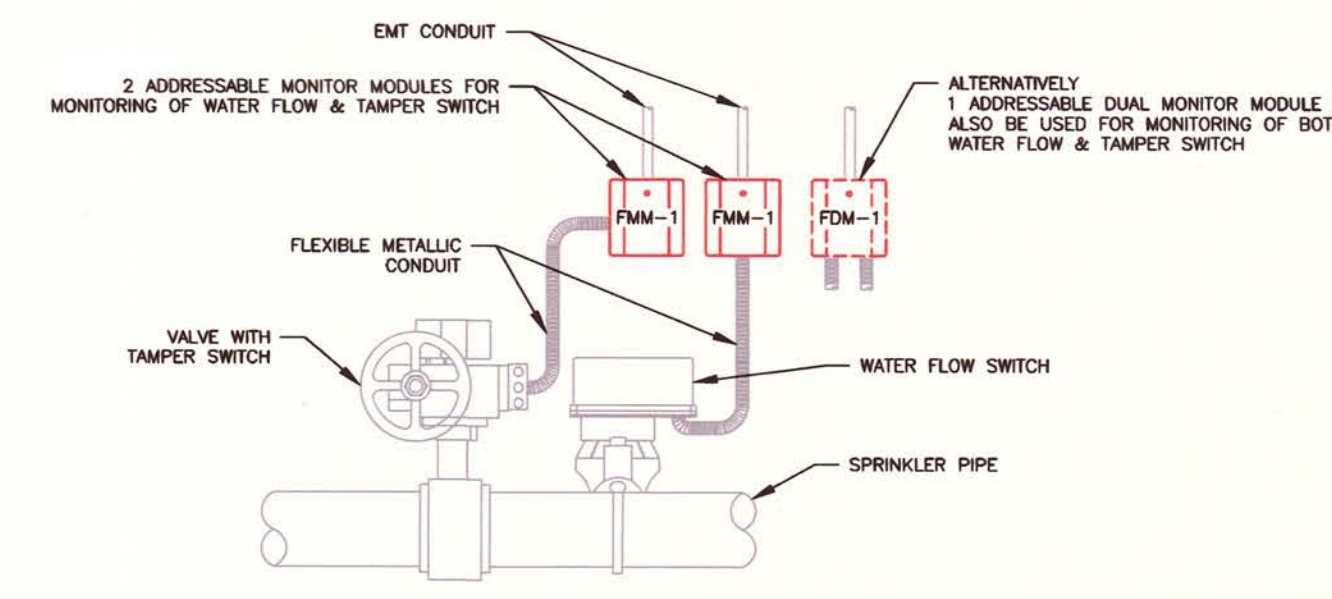
**DEVICE MOUNTING LOCATION DETAIL**  
FOR SMOKE/HEAT DETECTORS, PULL STATIONS,  
AND AUDIBLE/VISUAL AUDIBLE/VISUAL DEVICE  
FIRE ALARM SYSTEM  
NOT TO SCALE



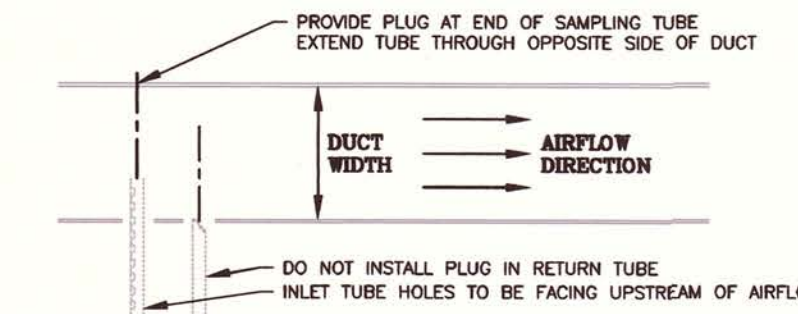
**TYPICAL DETECTOR SPACING DETAIL**  
FIRE ALARM SYSTEM  
NOT TO SCALE



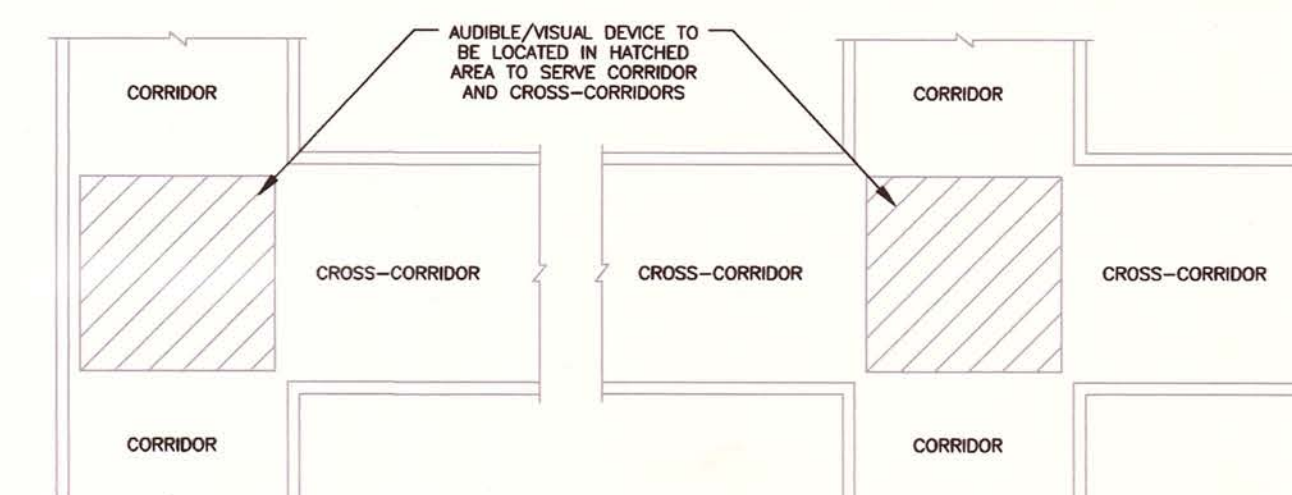
**DEVICE CEILING MOUNTING DETAIL**  
IN A DROP CEILING  
FIRE ALARM SYSTEM  
NOT TO SCALE



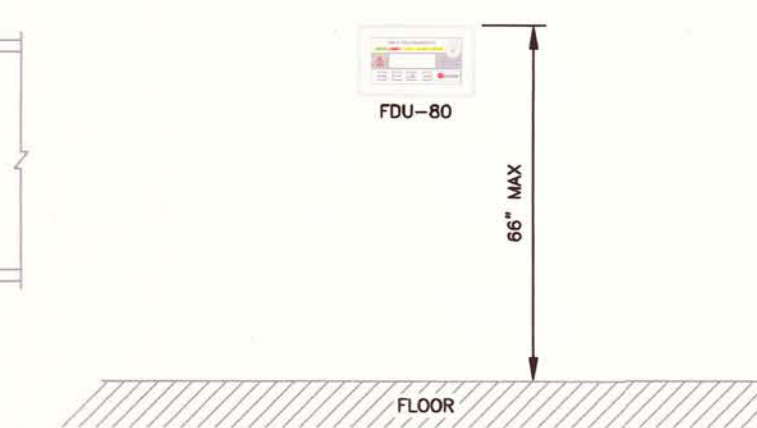
**MONITOR MODULE MOUNTING DETAIL FOR**  
WATER FLOW & TAMPER SWITCHES  
FIRE ALARM SYSTEM  
NOT TO SCALE



**DUCT SAMPLING TUBE INSTALLATION DETAIL**  
FIRE ALARM SYSTEM  
NOT TO SCALE



**NOTIFICATION DEVICE LOCATION DETAIL**  
IN A CROSS CORRIDOR  
FIRE ALARM SYSTEM  
NOT TO SCALE



**CABINET MOUNTING HEIGHT**  
FIRE ALARM SYSTEM  
NOT TO SCALE

Rev	Description	Date

Designer: J. Miller	Sales Engineer: S. Divita
Design Check: S. Adinolfi	Project Manager: S. Divita

**General Notes**

**NICET CERTIFIED**  
 Level IV  
**John F. Wojdan**  
 Certification Number: 52767  
 Valid Through: 12/31/2025

JOHN F. WOJDAN  
 LICENSED PROFESSIONAL ENGINEER  
 No. 059937

**STATION TWELVE**  
**FP MOVEMENT**  
 3095 SHERIDAN DRIVE  
 AMHERST, NY 14226  
**COVER SHEET**  
**DEVICE MOUNTING NOTES & DETAILS**  
**FIRE ALARM SYSTEM**

**Great Lakes Building Systems**  
  
 BUFFALO OFFICE: Buffalo, NY 14203  
 ROCHESTER OFFICE: Rochester, NY 14623  
 SUPPRESSION OFFICE: Buffalo, NY 14203  
 Fire/Security Systems Integrators

Project Number: SDO25071	Revision: 0
Date: 4.14.2025	<b>FA0.0</b>
Scale: AS NOTED	

**DRAWING NOTES:**

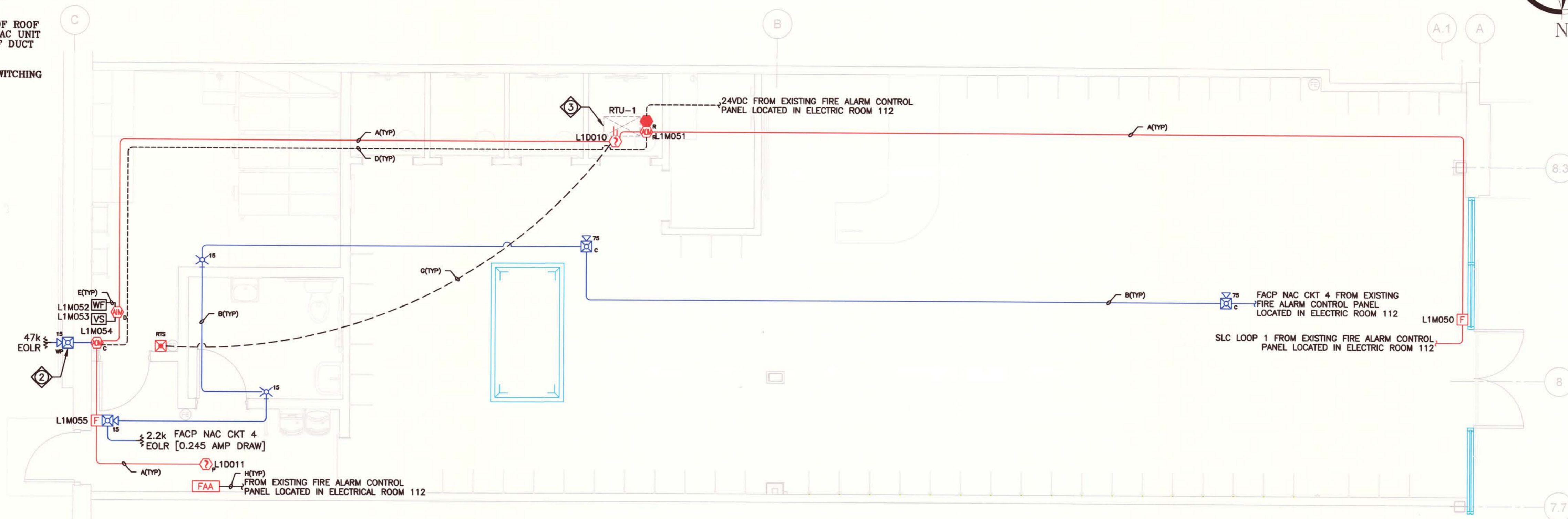
- INSTALLING CONTRACTOR TO BE RESPONSIBLE FOR ADDRESSING ALL DEVICES DURING SYSTEM INSTALLATION. FAILURE TO DO SO WILL REQUIRE THE REMOVAL, ADDRESSING, AND RE-INSTALLATION OF ALL ADDRESSABLE DEVICES.
- WEATHER-PROOF AUDIBLE/VISUAL DEVICE TO BE INSTALLED ON EXTERIOR OF BUILDING, 80" ABOVE FINISHED GRADE, TO INDICATE WATER FLOW FROM SPRINKLER RISER UPON ACTIVATION. VERIFY EXACT LOCATION WITH SPRINKLER CONTRACTOR & LOCAL FIRE MARSHAL.
- INSTALL DUCT SMOKE DETECTOR WITHIN SUPPLY AIR DUCT OF ROOF TOP UNIT. RELAY MODULES TO BE USED TO SHUT-DOWN HVAC UNIT UPON FIRE ALARM SYSTEM ACTIVATION. EXACT LOCATIONS OF DUCT SMOKE DETECTORS & REMOTE TEST STATIONS TO BE FIELD DETERMINED. (TYP ALL DUCT DETECTORS)
- CONVENTIONAL RELAY TO BE USED FOR HIGH CURRENT SWITCHING APPLICATIONS ONLY.

**FIRE ALARM SYSTEM LEGEND**

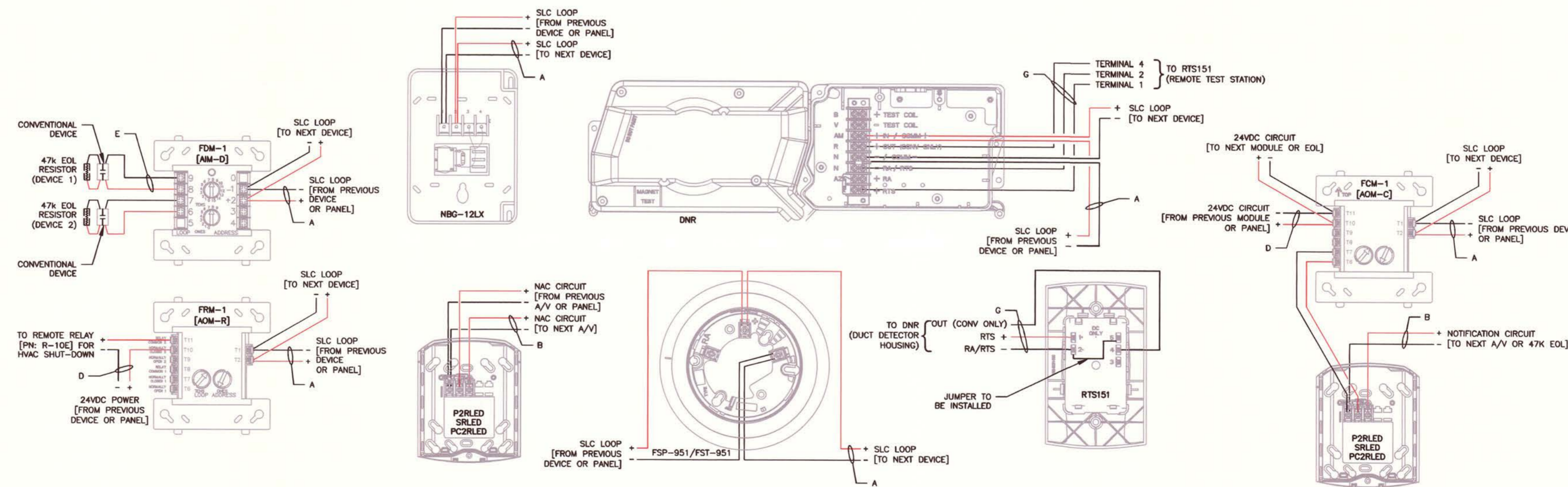
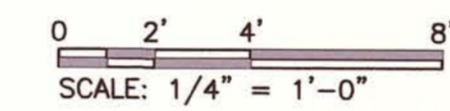
- FAA FIRE ALARM ANNUCIATOR PANEL
- F ADDRESSABLE PULL STATION
- AD ADDRESSABLE SMOKE DETECTOR, PHOTOELECTRIC
- ADS ADDRESSABLE DUCT SMOKE DETECTOR
- ADM ADDRESSABLE DUAL MONITOR MODULE
- ACM ADDRESSABLE CONTROL MODULE
- ARM ADDRESSABLE RELAY MODULE
- CRS CONVENTIONAL REMOTE RELAY FOR HIGH VOLTAGE CURRENT APPLICATIONS
- RTS REMOTE TEST STATION
- HWS HORN STROBE, WALL MOUNTED
- HCS HORN STROBE, CEILING MOUNTED
- SWS STROBE ONLY, WALL MOUNTED
- WF FLOW SWITCH
- VS VALVE SUPERVISORY, TAMPER SWITCH
- JB JUNCTION BOX
- EOL EOL
- 120vac 120VAC CONNECTION (BY OTHERS)
- CD CANDELA RATING
- C CEILING MOUNT
- WP WEATHER PROOF

**WIRING LEGEND**

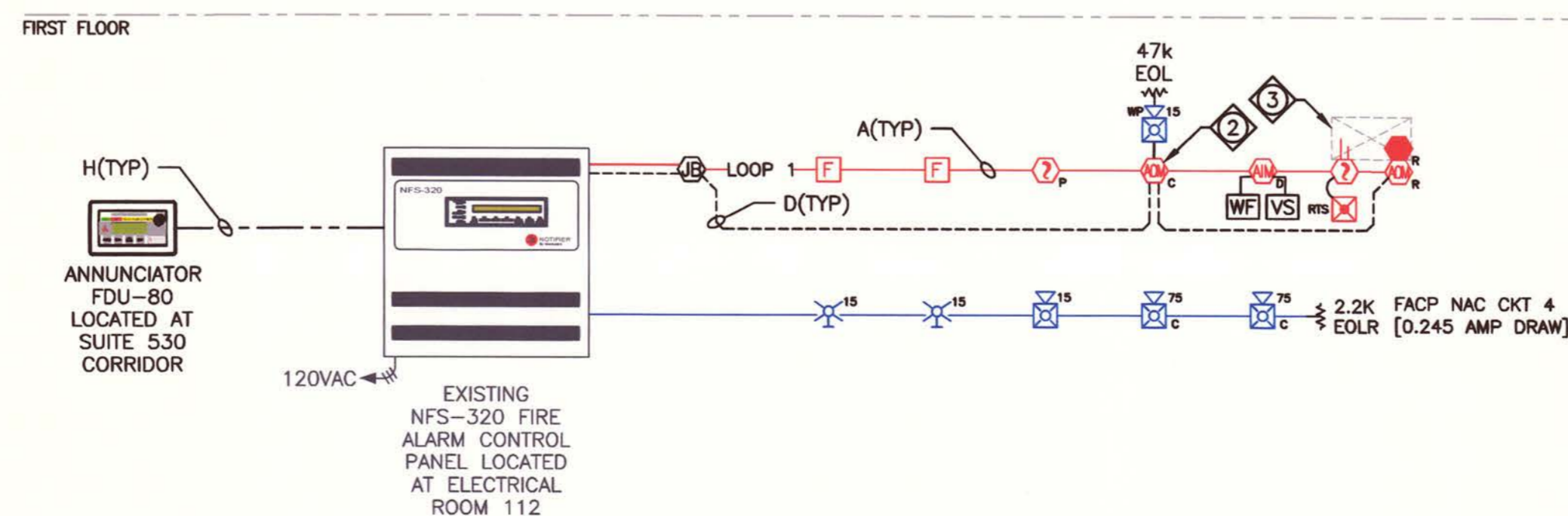
- |   |                                 |   |
|---|---------------------------------|---|
| A | SIGNALING LINE CIRCUIT (SLC)    | 2/C-18 AWG CABLE TWIST, RED WITH YELLOW STRIPE                                      |
| B | AUDIBLE/VISUAL NOTIFICATION CKT | 2/C-16 AWG CABLE, RED WITH BLUE STRIPE  |
| C | 24VDC RESETTABLE POWER          | 2/C-18 AWG CABLE, RED NO STRIPE   |
| D | 24VDC NON-RESETTABLE POWER      | 2/C-16 AWG CABLE, RED WITH WHITE STRIPE   |
| E | CONVENTIONAL DEVICE TIE-IN      | 2/C-18 AWG CABLE, RED   |
| F | NETWORK CABLE                   | CAT6  |
| G | REMOTE TEST STATION CIRCUIT     | 4/C-18 AWG CABLE, RED   |
| H | ANNUNCIATOR CIRCUIT             | (1) 2/C-16 AWG CABLE (POWER)<br>(2) 2/C-18 AWG CABLE, TWIST, SHIELD (DATA & RETURN) |



**BUILDING E SUITE 530 - SYSTEM LAYOUT**  
FIRE ALARM SYSTEM  
SCALE: 1/4" = 1'-0"



**DEVICE TERMINATION DETAILS**  
FIRE ALARM SYSTEM  
NOT TO SCALE



**SYSTEM RISER DIAGRAM**  
FIRE ALARM SYSTEM  
FOR DIAGRAMMATICAL PURPOSES ONLY

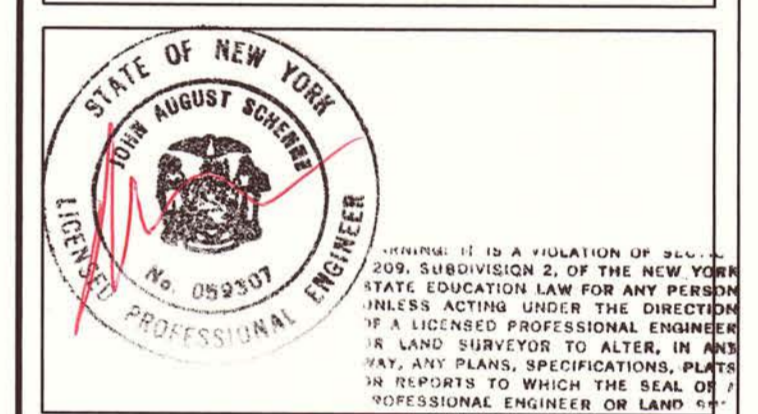


Rev	Description	Date

Drafter: <b>J. Miller</b>	Sales Engineer: <b>S. Divita</b>
Designer Check: <b>S. Adinolfi</b>	Project Manager: <b>S. Divita</b>

**General Notes**

- REFER TO COVER SHEET FOR SYSTEM LEGENDS, SYSTEM NOTES, & DEVICE INSTALLATION NOTES



**STATION TWELVE  
FP MOVEMENT**  
3095 SHERIDAN DRIVE  
AMHERST, NY 14226

**BUILDING E SUITE 530 - SYSTEM LAYOUT  
DEVICE TERMINATION NOTES & DETAILS  
SYSTEM RISER DIAGRAM**  
FIRE ALARM SYSTEM

**Great Lakes Building Systems**

**BUFFALO OFFICE:**  
2001 Tonawanda Blvd.  
Buffalo, New York 14218  
Tel: (716) 882-5810  
Fax: (716) 882-5815

**ROCHESTER OFFICE:**  
285 Seneca Park Mall Blvd.  
Rochester, New York 14623  
Tel: (716) 235-0221  
Fax: (716) 235-0241

**SUPPRESSION OFFICE:**  
3021 Transit Road  
Elma, New York 14059  
Tel: (716) 882-5215

Fire/Security Systems Integrators

Project Number: <b>SD025071</b>	Revision: <b>0</b>
Date: <b>4.14.2025</b>	<b>FA1.1</b>
Scale: <b>AS NOTED</b>	