

# DPW GARAGE

# VILLAGE OF HAMBURG

425 PLEASANT AVE., HAMBURG, NY 14075

APRIL 2026



**MAYOR**  
THOMAS P. TALLMAN

**DEPUTY MAYOR/TRUSTEE**  
PAUL GAUGHAN

**TRUSTEES**  
LAURA PALISANO HACKATHORN  
JEFF DAVIS  
HOLLY PARK

**VILLAGE ADMINISTRATOR**  
JASON T. COZZA

**SUPERINTENDENT OF PUBLIC WORKS**  
MARC SHUTTLEWORTH



**PROJECT LOCATION MAP**  
SCALE: NTS



**NUSSBAUMER & CLARKE, INC.**  
ENGINEERS AND SURVEYORS

3556 Lake Shore Road, Suite 500 | Buffalo, NY 14219  
(716) 827-8000 | (716) 826-7958 fax  
www.nussclarke.com

DRAWING INDEX	
DRAWING NO.	DRAWING TITLE
<b>C - CIVIL</b>	
C-001	PROJECT NOTES
C-002	LEGEND AND ABBREVIATIONS
C-101	EXISTING CONDITIONS AND SITE PLAN
C-102	GRADING AND DRAINAGE PLAN, PROFILE, AND SECTIONS
C-501	DETAILS
<b>S - STRUCTURAL</b>	
S-101	FOUNDATION PLAN
S-501	STRUCTURAL DETAILS





E

D

C

B

A

SURVEY		
FEATURE	EXISTING	PROPOSED
PROPERTY LINE	---	---
R.O.W.	--- R.O.W. ---	---
MUNICIPAL BOUNDARY	NIAGARA COUNTY ERIE COUNTY	---
ROAD CENTERLINE	---	---
EASEMENT	---	---
MAJOR CONTOUR & LABEL	---100---	---100---
MINOR CONTOUR & LABEL	---101---	---101---
BENCHMARK	BM	
TEMPORARY BENCHMARK	TBM	
CONTROL POINT	CP	
MONUMENT	MON	
IB	IB	
SURVEY NAIL	NAIL	

UTILITY LINETYPES		
FEATURE	EXISTING	PROPOSED
WATERMAIN	W	
SANITARY SEWER	SA	
STORM SEWER	ST	
COMBINED SEWER	CS	
GAS	G	
OVERHEAD ELECTRIC	OHE	
UNDERGROUND ELECTRIC	UGE	
UNDERGROUND COMMUNICATION	UC	
ABANDONED PIPE	A.P.	

TOPOGRAPHIC LINETYPES		
FEATURE	EXISTING	PROPOSED
FENCE	X-X-X	
GUARD RAIL	A-A-A	
RAILROAD TRACKS		
TOP OF BANK		
BOTTOM OF BANK	---	
STREAM/RIVER/POND	~~~~~	
DITCH/SWALE CENTERLINE	<< >>	
EDGE OF WOODS	~~~~~	

WATER		
FEATURE	EXISTING	PROPOSED
GATE VALVE	⊗	
BUTTERFLY VALVE	⊗	
HYDRANT	⊗	
WATER SERVICE	⊗	
REDUCER	▷	
END CAP	┌	
BLOW-OFF/SAMPLING POINT	⊗	
WATER METER	⊗	
WELL	⊗	
MONITORING WELL	⊗	

SANITARY		
FEATURE	EXISTING	PROPOSED
SANITARY MANHOLE	SA-MH	
COMBINED SEWER MANHOLE	CS-MH	
CLEANOUT	⊗	
END CAP	┌	
VENT	⊗	

STORM & DRAINAGE		
FEATURE	EXISTING	PROPOSED
STORM MANHOLE	ST-MH	
CATCH BASIN	CB	
YARD DRAIN	YD	
CLEANOUT	⊗	
CULVERT	>---	
END SECTION	>	

GAS		
FEATURE	EXISTING	PROPOSED
GAS VALVE	⊗	
GAS METER	⊗	
GAS MANHOLE	GAS-MH	
GAS REDUCER	▷	
END CAP	┌	
GAS UTILITY MARKER	△	

POWER		
FEATURE	EXISTING	PROPOSED
UTILITY POLE	UP	
GUY WIRE WITH ANCHOR	→	
LIGHT	⊗	
LIGHT POLE	⊗	
ELECTRICAL MANHOLE	E-MH	
ELECTRICAL BOX	⊗	
HANDHOLE	⊗	
TRAFFIC SIGNAL MANHOLE	TS-MH	

COMMUNICATION		
FEATURE	EXISTING	PROPOSED
UTILITY BOX	⊗	
TELEPHONE BOX	⊗	
TV BOX	⊗	
HANDHOLE	⊗	
UTILITY MANHOLE	UT-MH	

SITE & VEGETATION		
FEATURE	EXISTING	PROPOSED
SIGN	⊗	
DOUBLE POST SIGN	⊗⊗	
TRIPLE POST SIGN	⊗⊗⊗	
TRAFFIC SIGNAL	⊗	
TRAFFIC SIGNAL POLE	⊗	
CROSSWALK SIGNAL	⊗	
RAILROAD SIGNAL	⊗	
BOLLARD	•	
POST	⊗	
MAILBOX	MB	
FLAG POLE	⊗	
HEDGE	~~~~~	
DECIDUOUS TREE	TREE	
CONIFEROUS TREE	TREE	
STUMP	⊗	

MISCELLANEOUS		
FEATURE	EXISTING	PROPOSED
SOIL BORING	BH	
LIMIT OF DISTURBANCE	---	L.O.D.

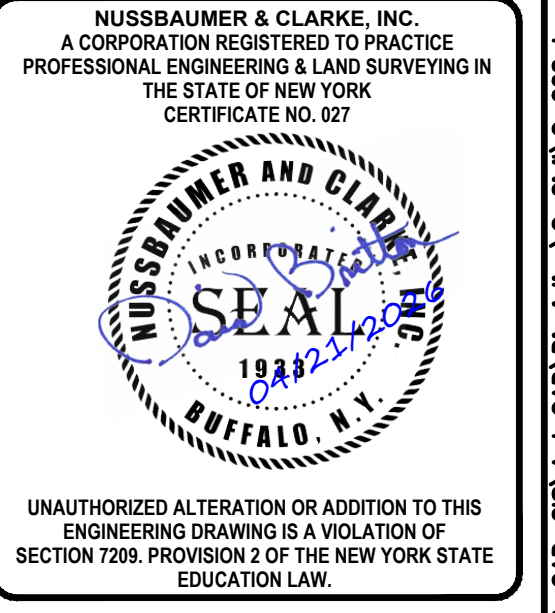
ABBREVIATIONS	
AIP	ABANDONED IN PLACE
ASPH	ASPHALT
BTD	BLACK TOP DRIVE
CATV	CABLE TELEVISION
CB	CATCH BASIN
CI	CAST IRON
CIP	CAST IRON PIPE
CL	CENTERLINE
CMP	CORRUGATED METAL PIPE
CO	CLEANOUT
CONC	CONCRETE
CPP	CORRUGATED PLASTIC PIPE
CS	COMBINED SEWER
DEM'OD	DEMOLISHED
DI	DRAINAGE INLET
DIA OR Ø	DIAMETER
DIP	DUCTILE IRON PIPE
DRV	DRIVE
ECWA	ERIE COUNTY WATER AUTHORITY
ELEC	ELECTRIC
ELEV	ELEVATION
EX OR EXIST	EXISTING
FDN	FOUNDATION
GAR	GARAGE
GSB	GAS SERVICE BOX
GV	GAS VALVE
HDPE	HIGH DENSITY POLYETHYLENE
HORIZ	HORIZONTAL
HPFS	HIGH PRESSURE FIRE SYSTEM
HSE	HOUSE
INV	INVERT
MB	MAILBOX
MEAS	MEASURED
MH	MANHOLE
MIN	MINIMUM
MW	MONITORING WELL
NIC OR N.I.C.	NOT IN CONTRACT
NTS	NOT TO SCALE
OH	OVERHEAD
OHE	OVERHEAD ELECTRIC
OHW	OVERHEAD WIRE
PAVT	PAVEMENT
PLT	PLASTIC
PROP	PROPOSED
PVC	POLYVINYL CHLORIDE
R	RADIUS
RCP	REINFORCED CONCRETE PIPE
ROW	RIGHT-OF-WAY
SA OR SAN	SANITARY
SRVC	SERVICE
SDWK	SIDEWALK
SIGCPP	SMOOTH INTERIOR CORRUGATED POLYETHYLENE PIPE
ST	STORM
TEL	TELEPHONE
TP	TEST PIT
TS	TRAFFIC SIGNAL
TYP	TYPICAL
UG	UNDERGROUND
UGC	UNDERGROUND COMMUNICATION
UGE	UNDERGROUND ELECTRIC
UP	UTILITY POLE
UTIL	UTILITY
VENT	VENT
VLV	VALVE
VERT	VERTICAL
WS	WATERS SERVICE
WV	WATER VALVE



**DPW GARAGE  
VILLAGE OF HAMBURG  
425 PLEASANT AVE., HAMBURG, NY 14075**

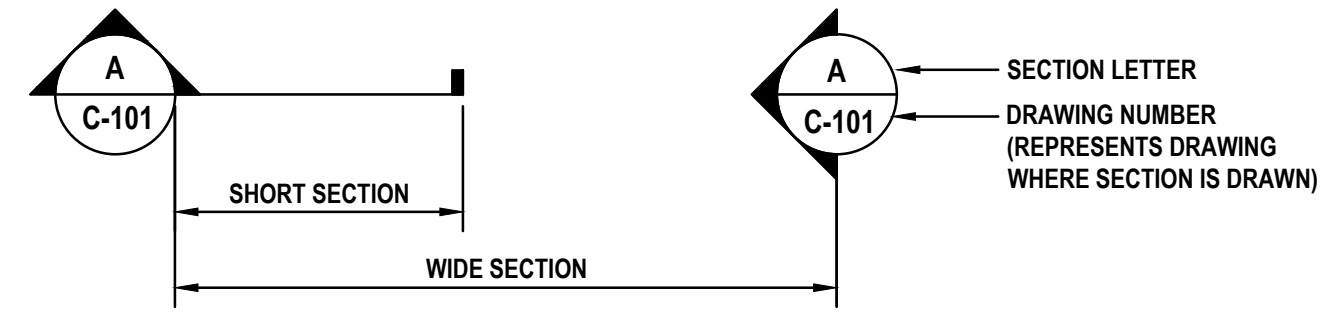
**LEGEND AND ABBREVIATIONS**

ISSUED		
No.	DESCRIPTION	DATE
0	AS ADVERTISED FOR BIDS	04/21/26



PROJECT NUMBER	24J1-0104
DATE	APRIL 2026
DRAWN BY	CRR
DESIGNED BY	CRR/TAR
CHECKED BY	TAR
APPROVED BY	DMB
SCALE:	NONE
= 1 INCH	
SHEET No.	2 OF 7
<b>C-002</b>	

TYPICAL SECTION MARKS (FOR PLANS)



**DPW GARAGE**  
**VILLAGE OF HAMBURG**  
 425 PLEASANT AVE., HAMBURG, NY 14075  
**EXISTING CONDITIONS**  
**AND SITE PLAN**

ISSUED		
No.	DESCRIPTION	DATE
0	AS ADVERTISED FOR BIDS	04/21/26

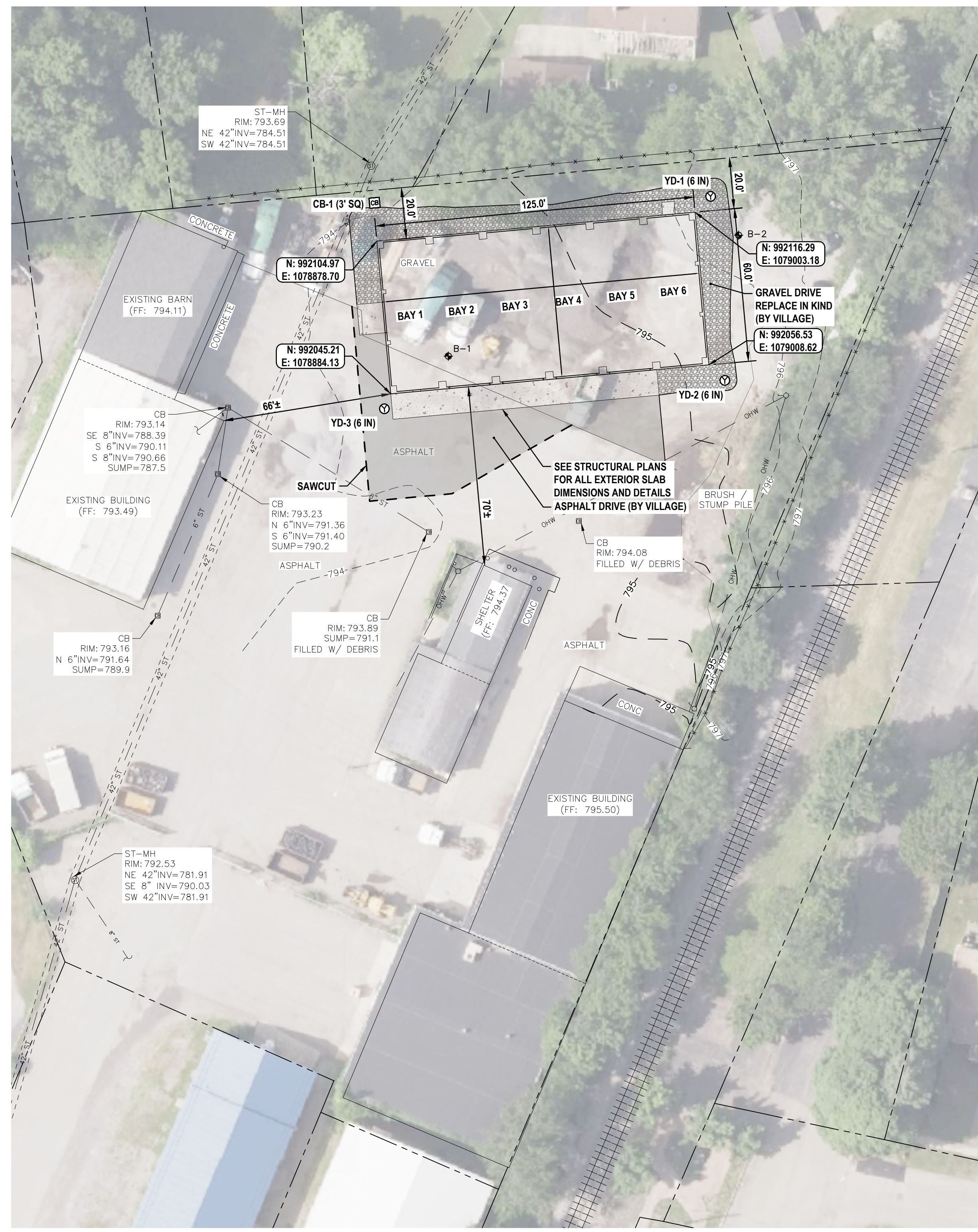
NUSSBAUMER & CLARKE, INC.  
 A CORPORATION REGISTERED TO PRACTICE  
 PROFESSIONAL ENGINEERING & LAND SURVEYING IN  
 THE STATE OF NEW YORK  
 CERTIFICATE NO. 027

UNAUTHORIZED ALTERATION OR ADDITION TO THIS  
 ENGINEERING DRAWING IS A VIOLATION OF  
 SECTION 7209, PROVISION 2 OF THE NEW YORK STATE  
 EDUCATION LAW.

PROJECT NUMBER	24J1-0104
DATE	APRIL 2026
DRAWN BY	CRR
DESIGNED BY	CRR/TAR
CHECKED BY	TAR
APPROVED BY	DMB
SCALE:	1" = 30'
SHEET No.	3 OF 7
<b>C-101</b>	

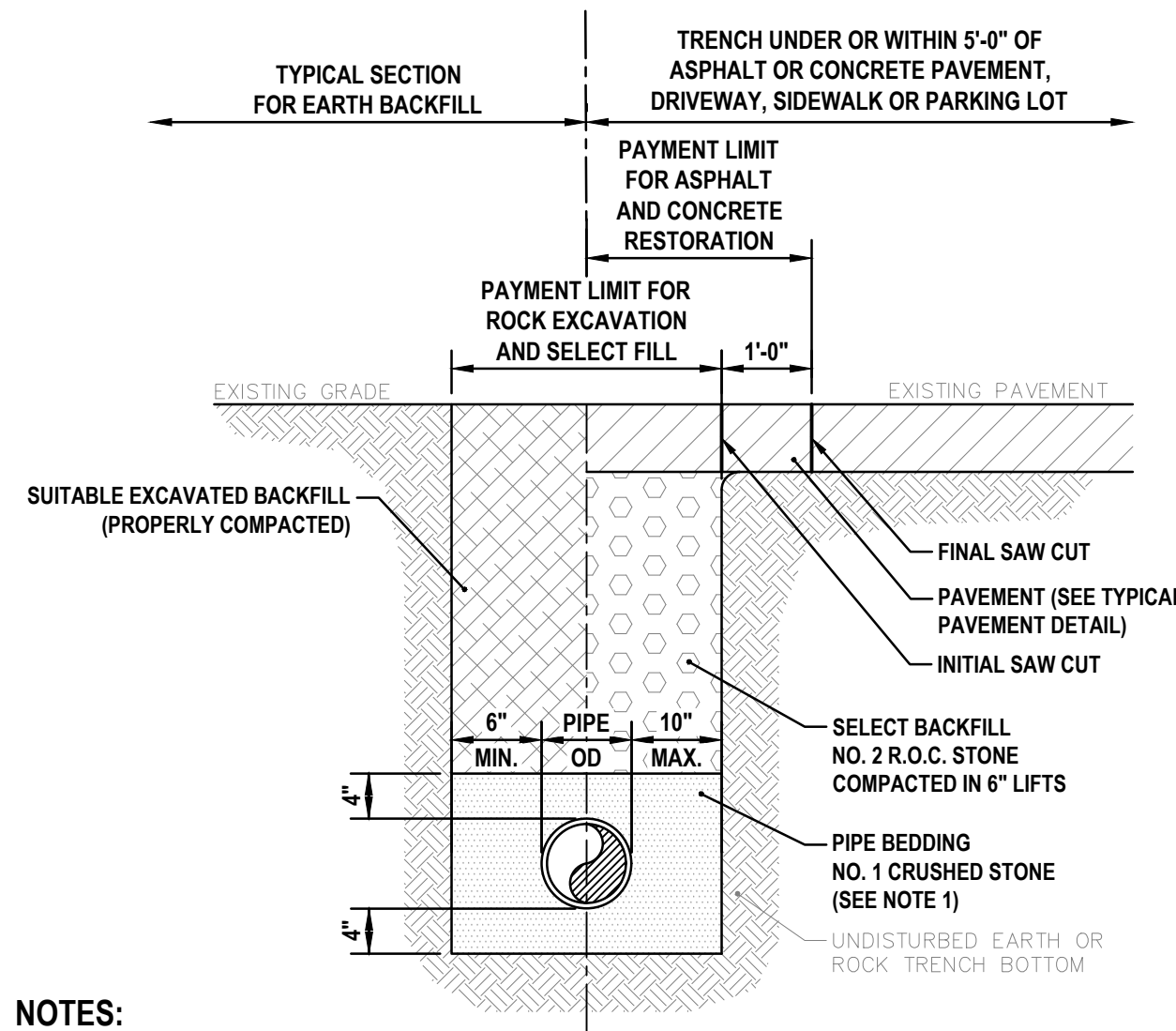


**1** EXISTING CONDITIONS PLAN  
 SCALE: 1" = 30'



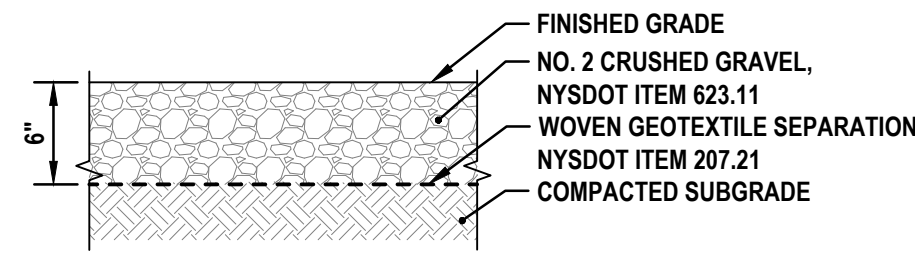
**2** SITE PLAN  
 SCALE: 1" = 30'



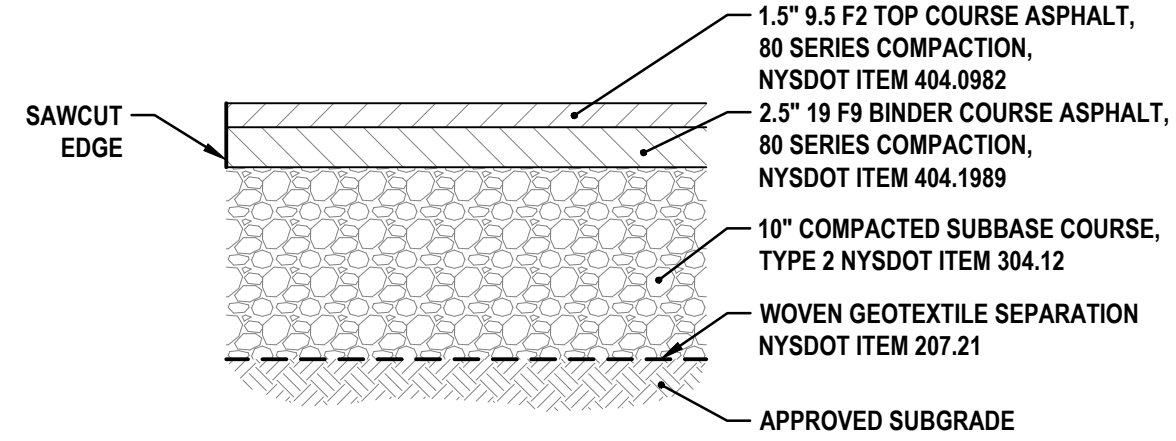


- NOTES:**
- PIPE BEDDING MATERIAL SHALL BE NO. 1 CRUSHED STONE WITH A GRADATION CONFORMING WITH NYS DOT SECTION 703-02. THE CRUSHED STONE SHALL BE WELL GRADED WITH NO PARTICLES LARGER THAN ONE (1) INCH AND HAVING A MAXIMUM GRADATION MEETING THE LIMITS DESCRIBED IN THE SPECIFICATIONS. THE BEDDING SHALL BE COMPACTED IN 6" LIFTS WITH EQUIPMENT ACCEPTABLE TO THE PIPE MANUFACTURER. NO SLAG SHALL BE ALLOWED.
  - SHALE SHALL NOT BE USED AS BACKFILL MATERIAL FOR PIPE CROSSINGS OF THE PAVEMENT AND CURBS.
  - SHALE SHALL NOT BE PLACED DIRECTLY AGAINST THE UNPROTECTED PIPE SURFACE. A MINIMUM OF 12" OF BEDDING STONE OR SELECT MATERIAL SHALL OVERLAY THE CROWN OF THE PIPE PRIOR TO PLACEMENT OF SHALE MATERIAL.
  - PIPE INSTALLATION SHALL BE IN ACCORDANCE WITH MANUFACTURER'S RECOMMENDATIONS.
  - TRENCHING OPERATIONS SHALL INCLUDE ALL NECESSARY DEWATERING.
  - TRENCH DETAILS ARE ONLY SHOWN FOR PURPOSES OF MATERIAL PLACEMENT AND MAXIMUM PAY LIMITS.

**1 TYPICAL TRENCH**  
SCALE: NTS

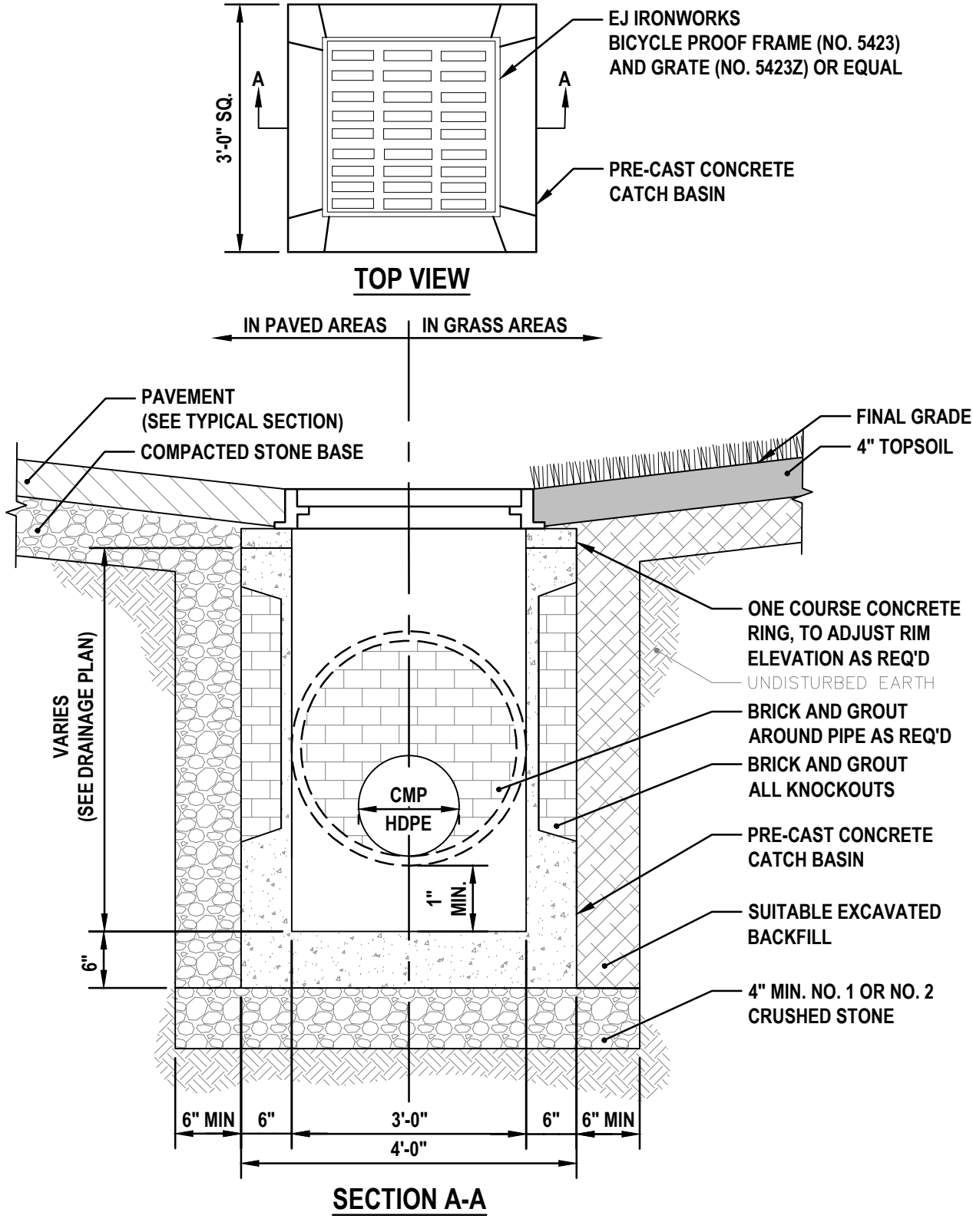


**2 TYPICAL GRAVEL PARKING LOT**  
SCALE: NTS

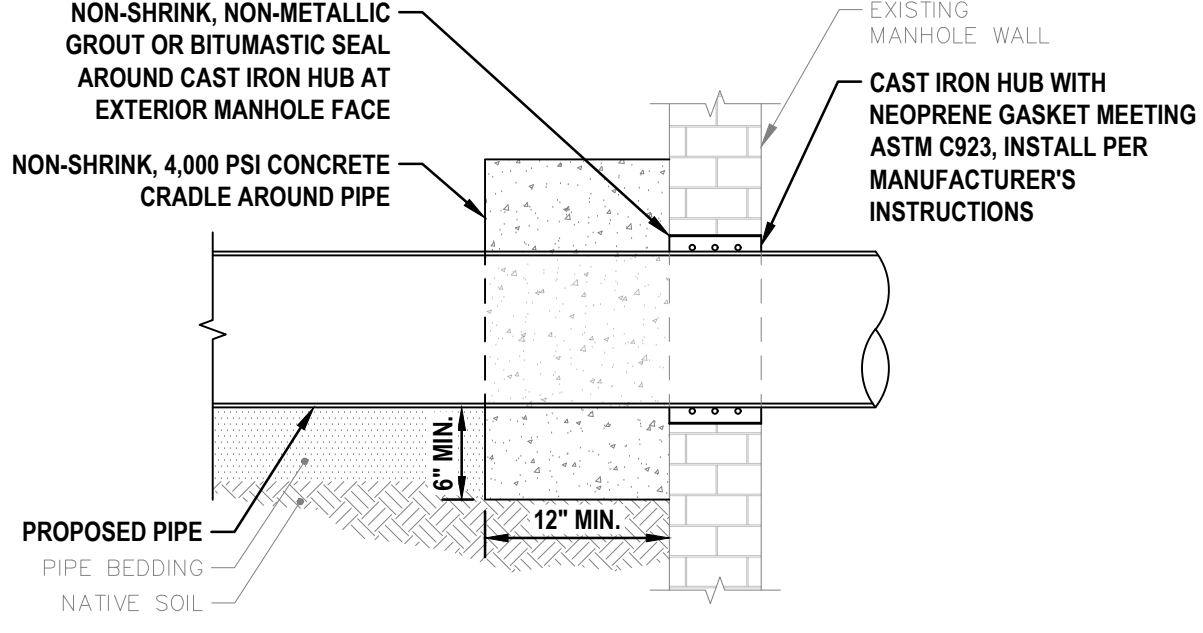


- NOTES:**
- THE BINDER COURSE MAY CONSIST OF RECYCLED ASPHALT MATERIAL.

**3 TYPICAL PARKING LOT PAVEMENT SECTION**  
SCALE: NTS

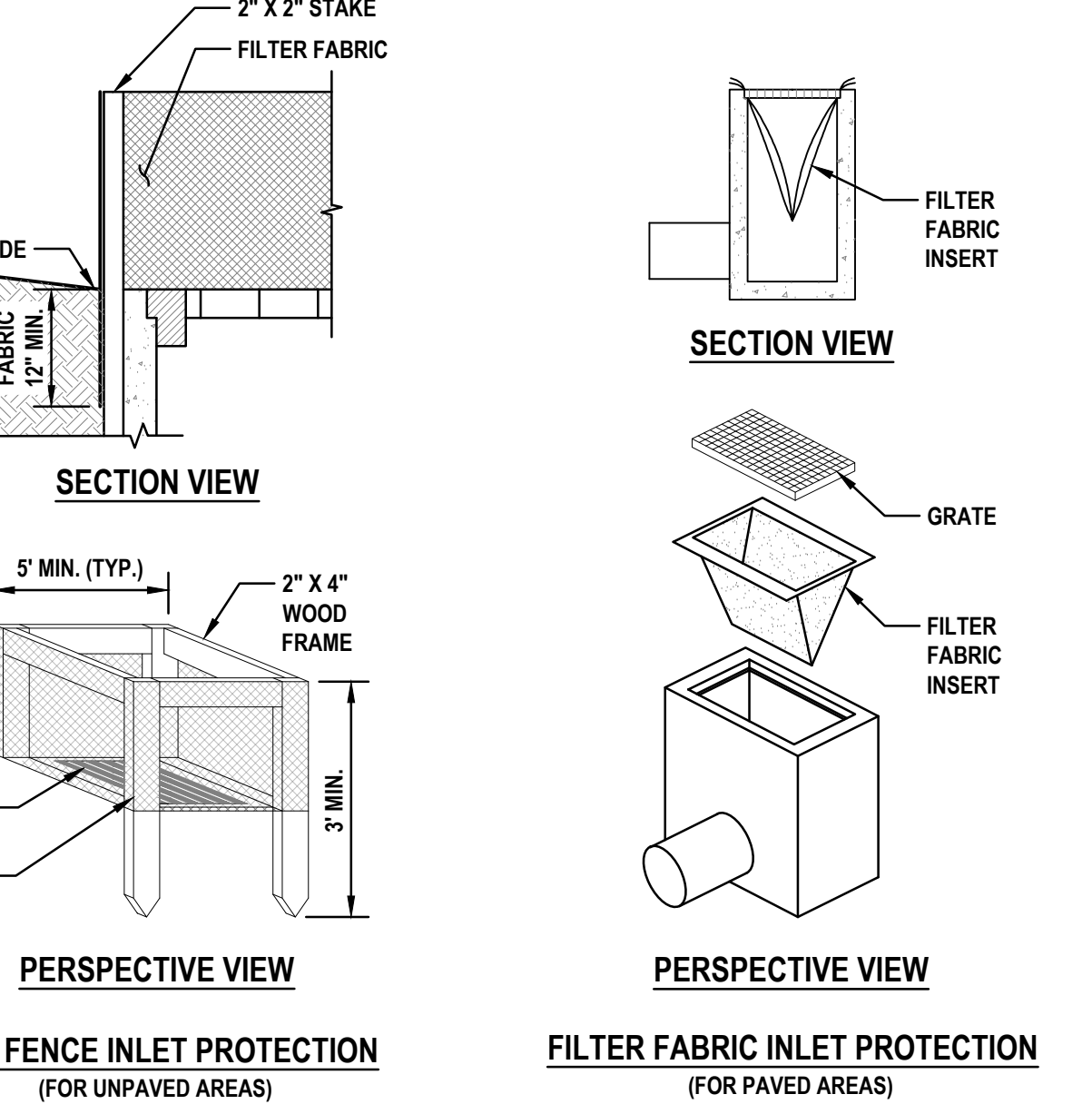


**4 TYPICAL 36IN SQ CATCH BASIN**  
SCALE: NTS



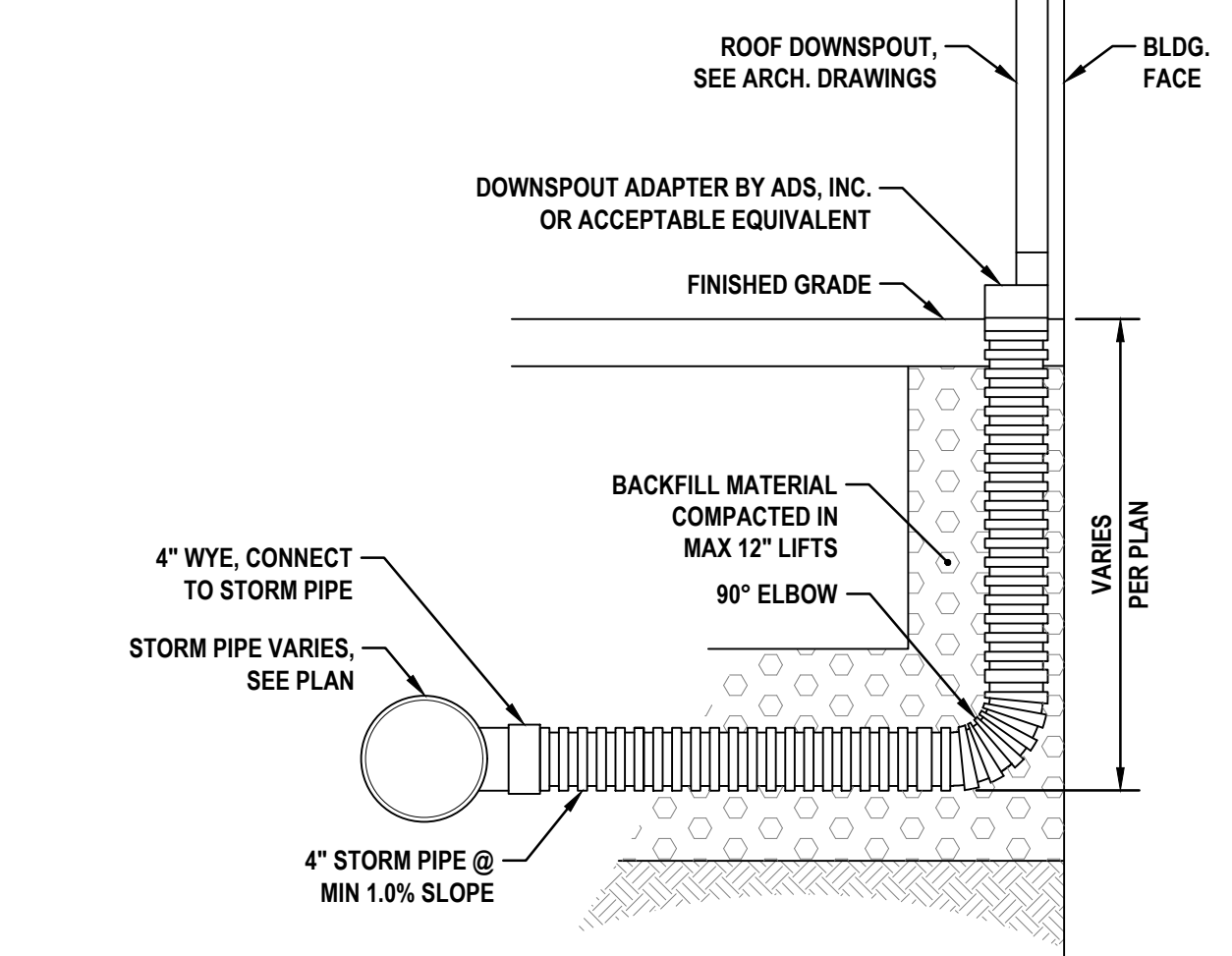
- NOTES:**
- CAREFULLY CLEAN AND CUT OPENING IN EXISTING MANHOLE WALL TO REQUIRED DIAMETER FOR CAST IRON HUB. CHIP AND BREAK ONLY AS REQUIRED FOR CONNECTION CLEARANCE. CORE DRILL OPENING PER CAST IRON HUB MANUFACTURER SPECIFICATIONS.

**5 CONNECTION TO EXISTING BRICK MANHOLE**  
SCALE: NTS

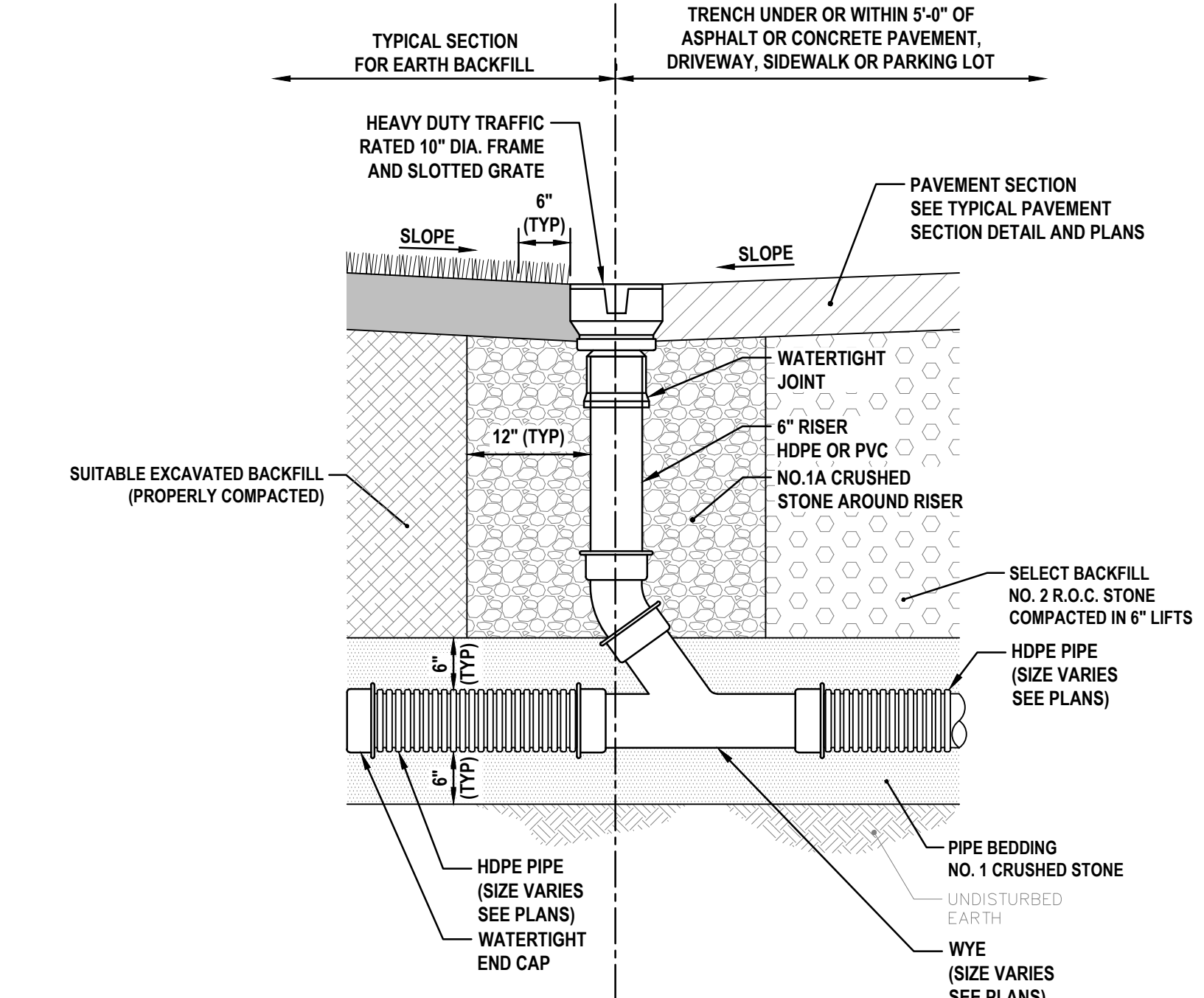


- SILT FENCE INLET PROTECTION NOTES:**
- FILTER FABRIC SHALL HAVE AN EOS OF 40-85. BURLAP MAY BE USED FOR SHORT TERM APPLICATIONS.
  - CUT FABRIC FROM A CONTINUOUS ROLL TO ELIMINATE JOINTS. IF JOINTS ARE NEEDED THEY WILL BE OVERLAPPED TO THE NEXT STAKE.
  - STAKE MATERIALS WILL BE STANDARD 2" X 4" WOOD OR EQUIVALENT, OR METAL WITH A MINIMUM LENGTH OF 3 FEET.
  - SPACE STAKES EVENLY AROUND INLET 3 FEET APART AND DRIVE A MINIMUM 18 INCHES DEEP. SPANS GREATER THAN 3 FEET MAY BE BRIDGED WITH THE USE OF WIRE MESH BEHIND THE FILTER FABRIC FOR SUPPORT.
  - FABRIC SHALL BE EMBEDDED 1 FOOT MINIMUM BELOW GROUND AND BACKFILLED. IT SHALL BE SECURELY FASTENED TO THE STAKES AND FRAME.
  - A 2" X 4" WOOD FRAME SHALL BE COMPLETED AROUND THE CREST OF THE FABRIC FOR OVER FLOW STABILITY.
- FILTER FABRIC INLET PROTECTION NOTES:**
- INSPECT ON A WEEKLY BASIS AND REMOVE SILT AS NECESSARY.

**8 TYPICAL FILTER FABRIC INLET PROTECTION**  
SCALE: NTS



**6 ROOF DRAIN CONNECTION DETAIL**  
SCALE: NTS



**7 TYPICAL YARD DRAIN**  
SCALE: NTS

**NUSSBAUMER & CLARKE, INC.**  
ENGINEERS AND SURVEYORS  
EST. 1933  
3556 Lake Shore Road, Suite 500 | Buffalo, NY 14219  
(716) 827-8000 | (716) 826-7958 fax  
www.nussclarke.com

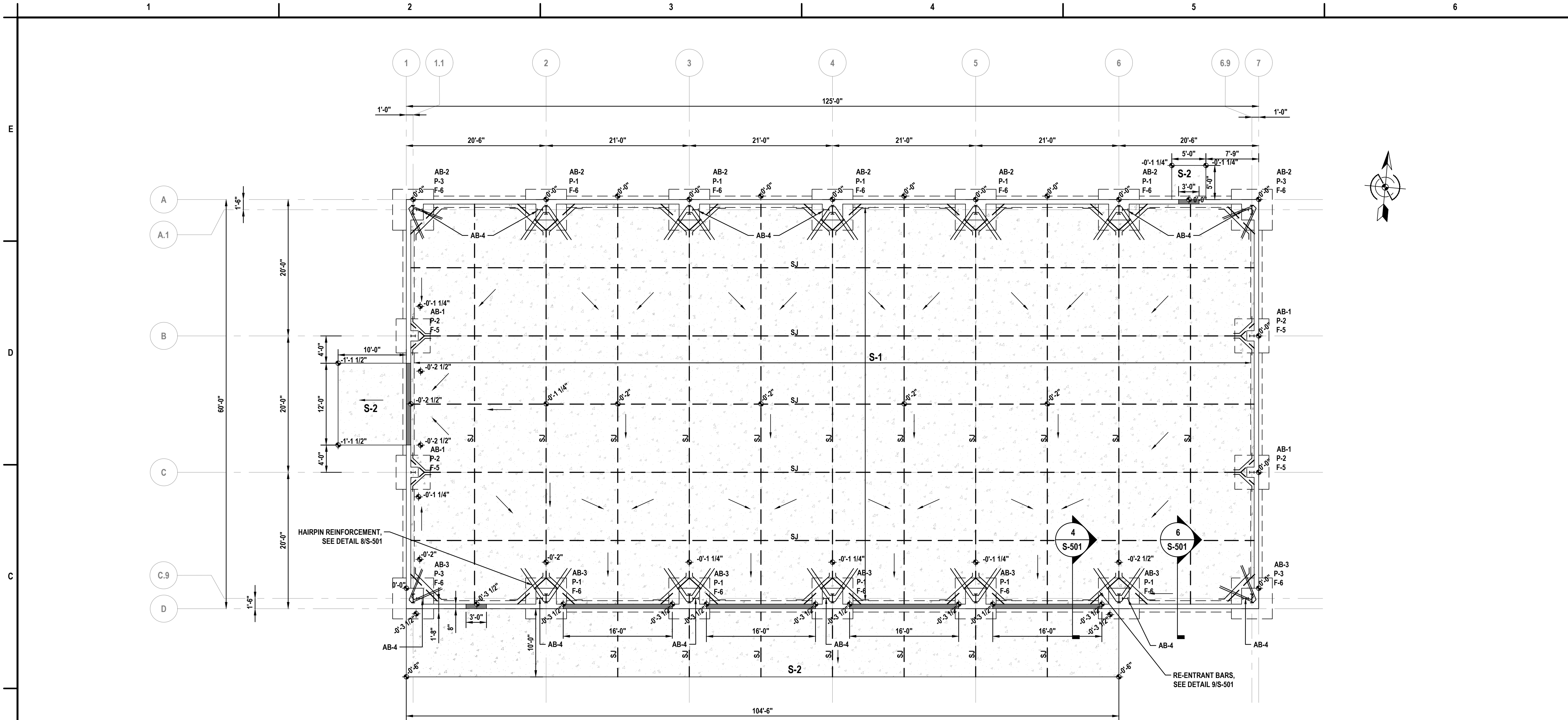
**DPW GARAGE**  
**VILLAGE OF HAMBURG**  
425 PLEASANT AVE., HAMBURG, NY 14075  
**DETAILS**

ISSUED		
No.	DESCRIPTION	DATE
0	AS ADVERTISED FOR BIDS	04/21/26

NUSSBAUMER & CLARKE, INC.  
A CORPORATION REGISTERED TO PRACTICE  
PROFESSIONAL ENGINEERING & LAND SURVEYING IN  
THE STATE OF NEW YORK  
CERTIFICATE NO. 027

UNAUTHORIZED ALTERATION OR ADDITION TO THIS  
ENGINEERING DRAWING IS A VIOLATION OF  
SECTION 7209, PROVISION 2 OF THE NEW YORK STATE  
EDUCATION LAW.

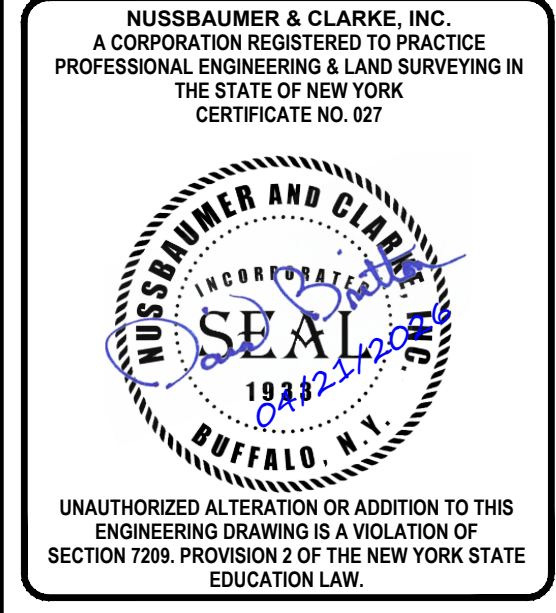
PROJECT NUMBER	24J1-0104
DATE	APRIL 2026
DRAWN BY	AIS
DESIGNED BY	CRR/TAR
CHECKED BY	TAR
APPROVED BY	DMB
SCALE:	NTS
SHEET No. 5 OF 7	
<b>C-501</b>	



3556 Lake Shore Road, Suite 500 | Buffalo, NY 14219  
 (716) 827-8000 | (716) 826-7958 fax  
 www.nussclarke.com

**DPW GARAGE  
 VILLAGE OF HAMBURG  
 425 PLEASANT AVE., HAMBURG, NY 14075  
 FOUNDATION PLAN**

ISSUED		
No.	DESCRIPTION	DATE
0	AS ADVERTISED FOR BIDS	04/21/26



UNAUTHORIZED ALTERATION OR ADDITION TO THIS ENGINEERING DRAWING IS A VIOLATION OF SECTION 7209, PROVISION 2 OF THE NEW YORK STATE EDUCATION LAW.

PROJECT NUMBER	24J1-0104
DATE	APRIL 2026
DRAWN BY	ADM
DESIGNED BY	MRM
CHECKED BY	CMA
APPROVED BY	DMB
SCALE:	1/8" = 1'-0"

SHEET No. 6 OF 7  
**S-101**

**1 FOUNDATION PLAN**  
 SCALE: 1/8" = 1'-0"

ANCHOR BOLT SCHEDULE				
MARK	QTY	DIA.	EMBED.	GRADE
AB-1	4	3/4"	14"	F1554, GR. 36 BOLTS
AB-2	4	3/4"	16"	F1554, GR. 36 BOLTS
AB-3	4	3/4"	20"	F1554, GR. 36 BOLTS
AB-4	4	1/2"	12"	F1554, GR. 36 BOLTS

PIER SCHEDULE					
MARK	DIMENSIONS		REINFORCING		PIER REINF. CONFIG.
	LENGTH	WIDTH	VERT. REINF.	REINF. TIES	
P-1	3'-0"	3'-0"	(8) #5	#4 @ 12" O.C.	8 BAR
P-2	1'-6"	1'-6"	(4) #5	#4 @ 12" O.C.	4 BAR
P-3	3'-0"	2'-6"	(8) #5	#4 @ 12" O.C.	8 BAR

FOOTING SCHEDULE			
MARK	DIMENSION	REINFORCING	REINF. LOCATIONS
F-6	6'-0"x6'-0"x1'-0"	(5) #5 BARS, EACH WAY	BOTTOM
F-5	5'-0"x5'-0"x1'-0"	(4) #5 BARS, EACH WAY	BOTTOM

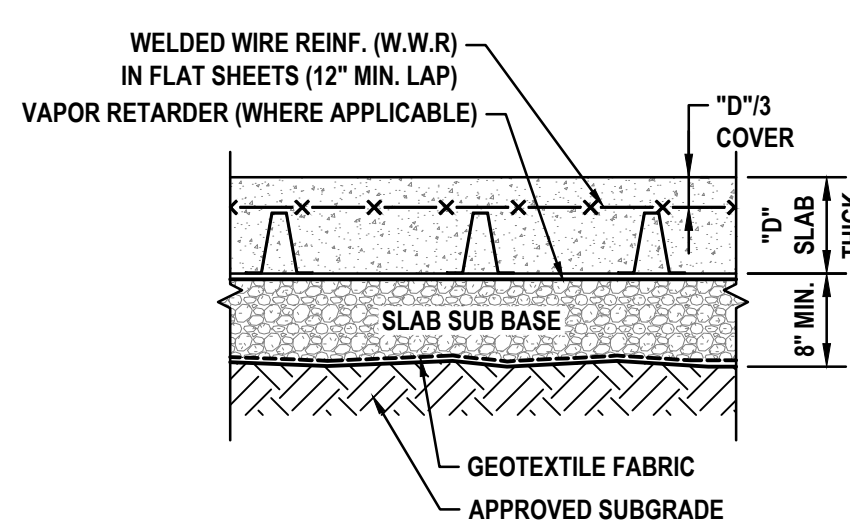
SLAB SCHEDULE			
MARK	THICKNESS	REINFORCING	SUB-BASE
S-1	8"	4x4-W4.0xW4.0 WWF	12" W/ VAPOR RETARDER
S-2	8"	4x4-W4.0xW4.0 WWF	12"

**FOUNDATION NOTES:**

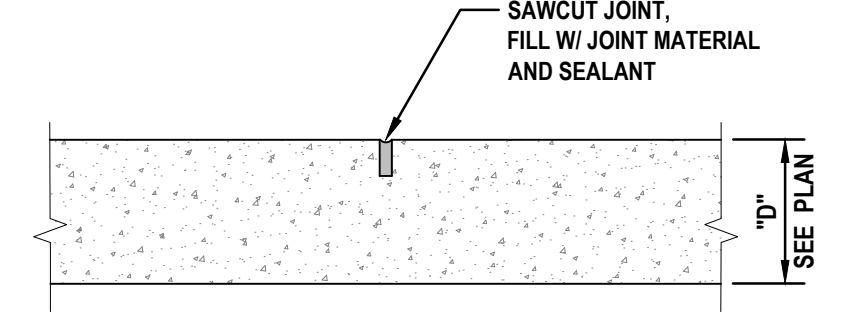
- AB-XX INDICATES ANCHOR BOLT  
 P-XX INDICATES CONCRETE PIER  
 F-XX INDICATES COLUMN FOOTING
- TOP OF PIER = 795.30' = 0'-0"
- TOP OF SLAB = EL VARIES UNO AS T/SLAB +/- FROM TYPICAL TOP OF PIER ELEVATION.
- TOP OF EXTERIOR FOOTING = EL = -4'-0", UNO B/FTG +/- FROM ADJACENT TOP OF GRADE.
- TOP OF WALL = EL 0'-0" UNO AS T/WALL +/- FROM TOP OF PIER ELEVATION.
- ALL SLAB ON GRADE JOINTS ARE SAWCUT JOINTS (INDICATED AS SJ). CONTRACTOR SHALL DETERMINE LOCATION OF FORMED JOINTS, IF ANY. SEE TYPICAL CONCRETE DETAILS FOR TYPICAL SLAB ON GRADE JOINTS.
- COORDINATE ALL DOOR LOCATIONS AND SIZES WITH MANUFACTURER DWGS. SEE TYPICAL FOUNDATION WALL DETAIL FOR EXTERIOR DOOR DETAIL.

**KEY PLAN:**

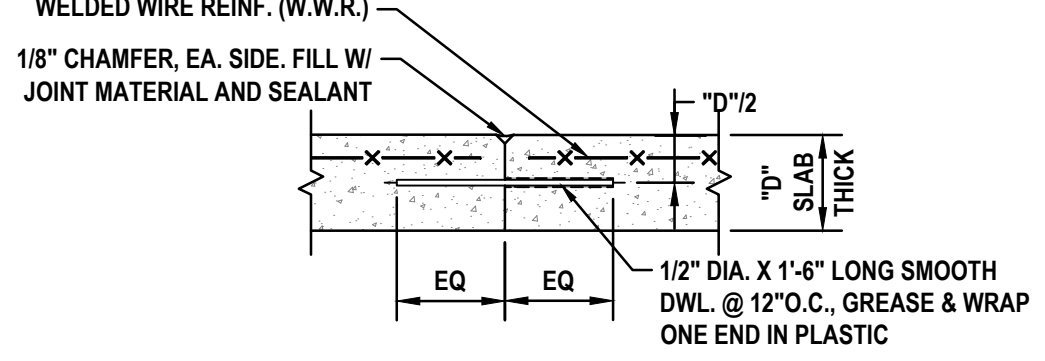
- INDICATES DEPRESSED FOUNDATION WALL. SEE 4/S-501
- SLAB GRADING (VARIES, TYP.)



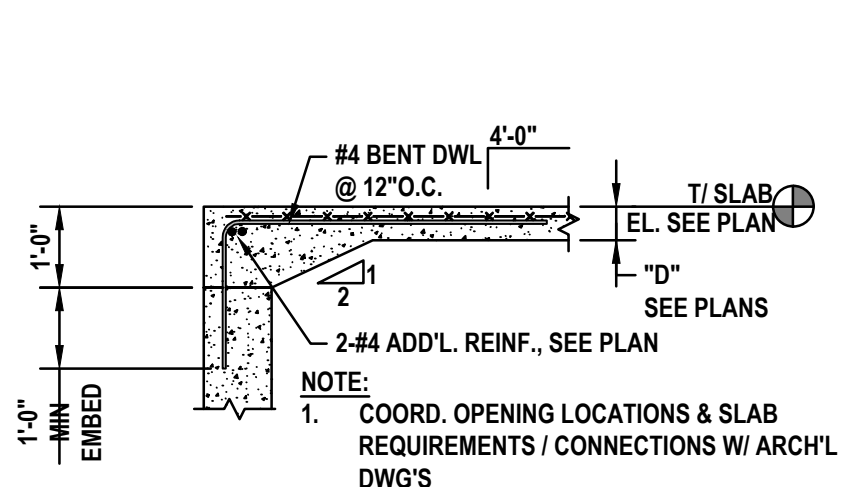
**1 TYPICAL SLAB DETAIL**  
SCALE: NTS



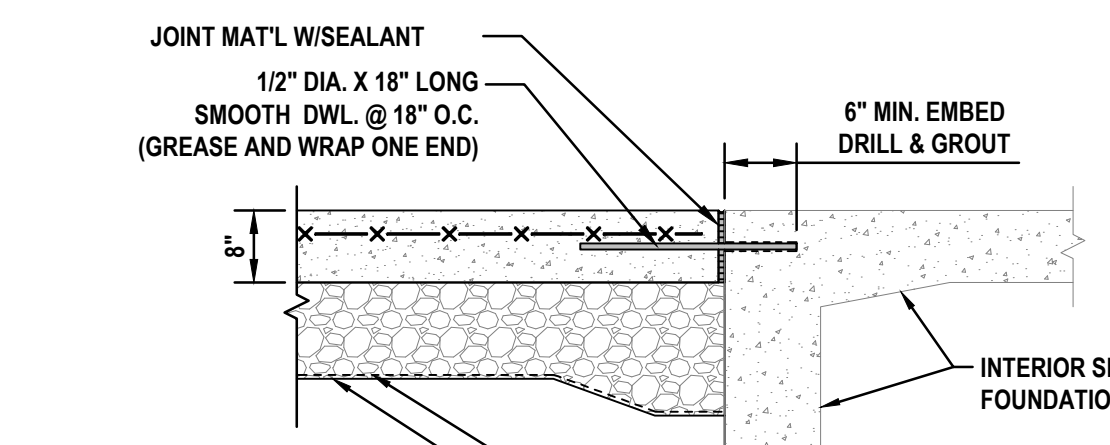
**2 TYPICAL SAWCUT JOINT (SJ)**  
SCALE: NTS



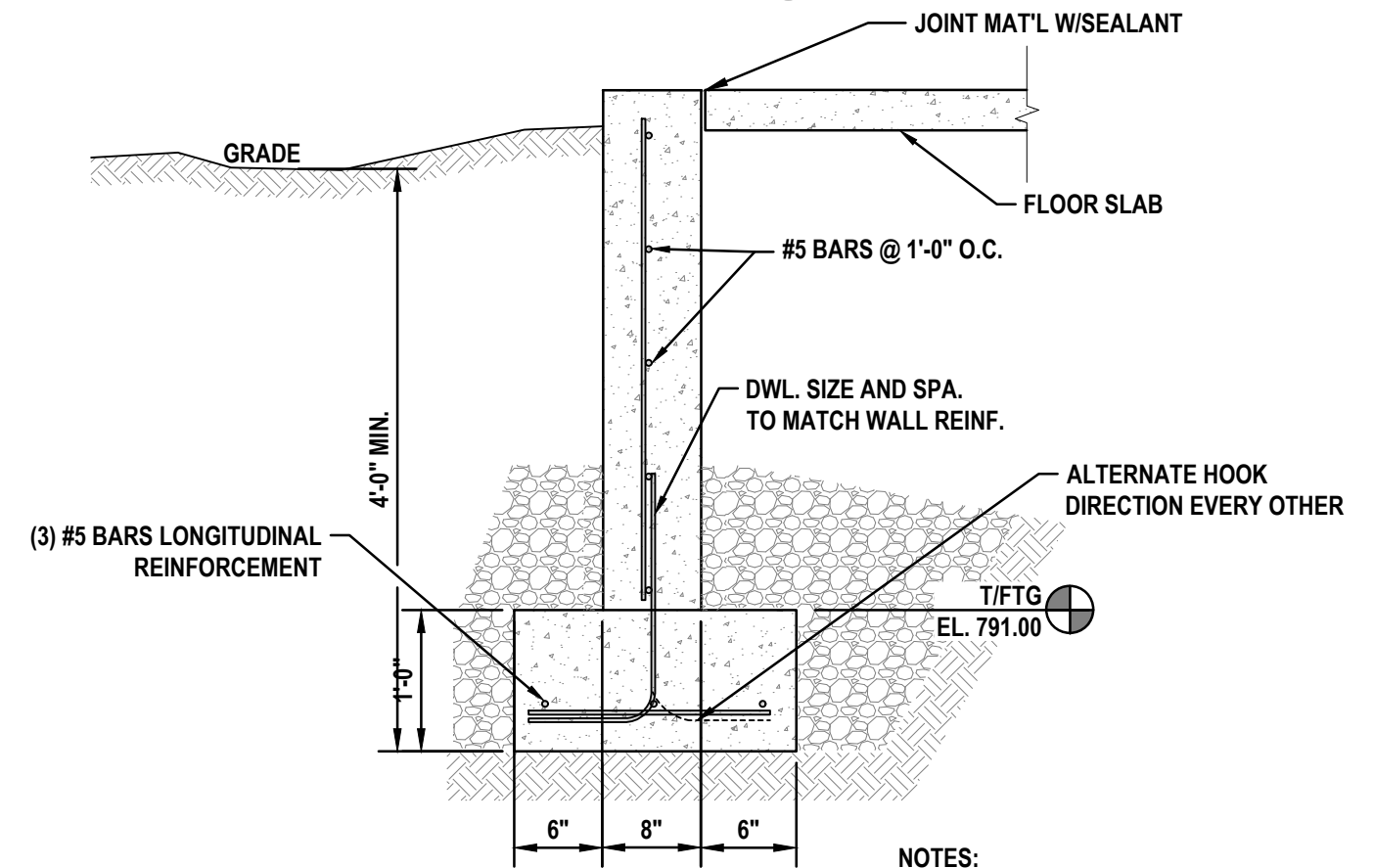
**3 TYPICAL FORMED JOINT (FJ)**  
SCALE: NTS



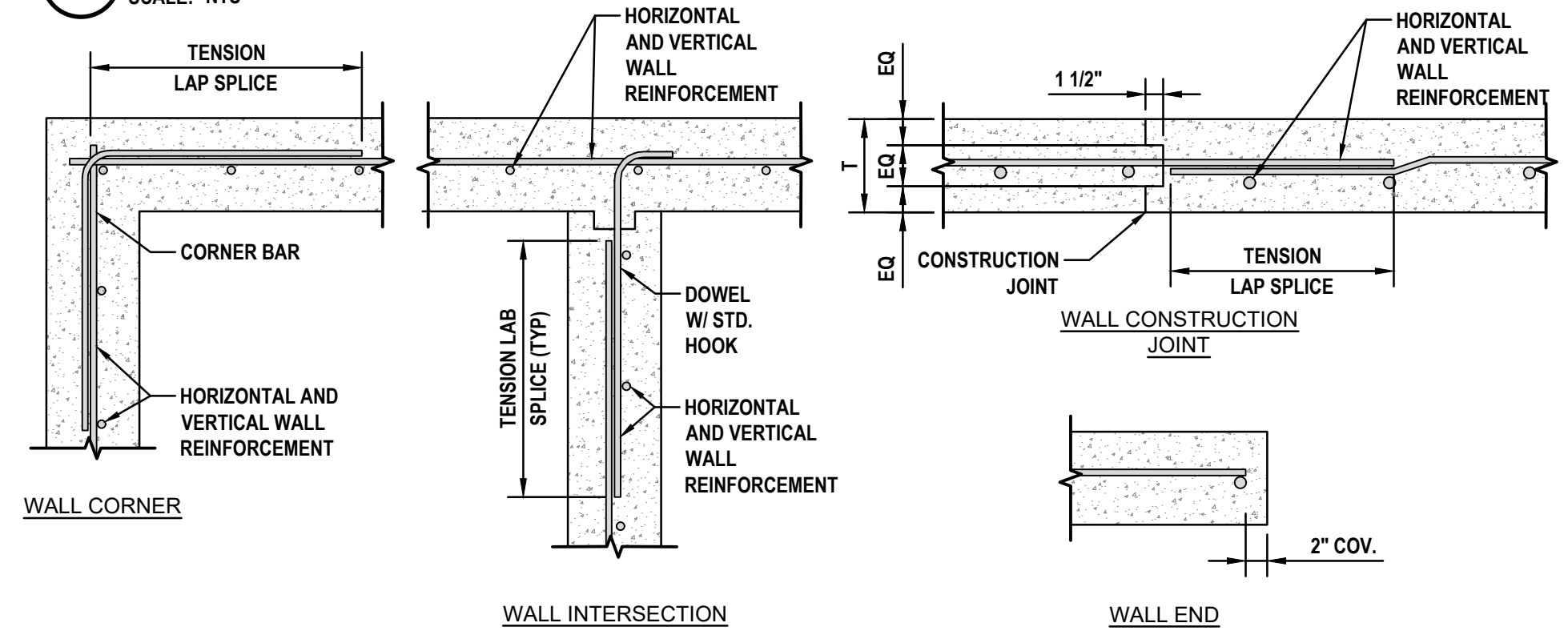
**4 TYPICAL CONCRETE WALL AT DOOR OPENING**  
SCALE: NTS



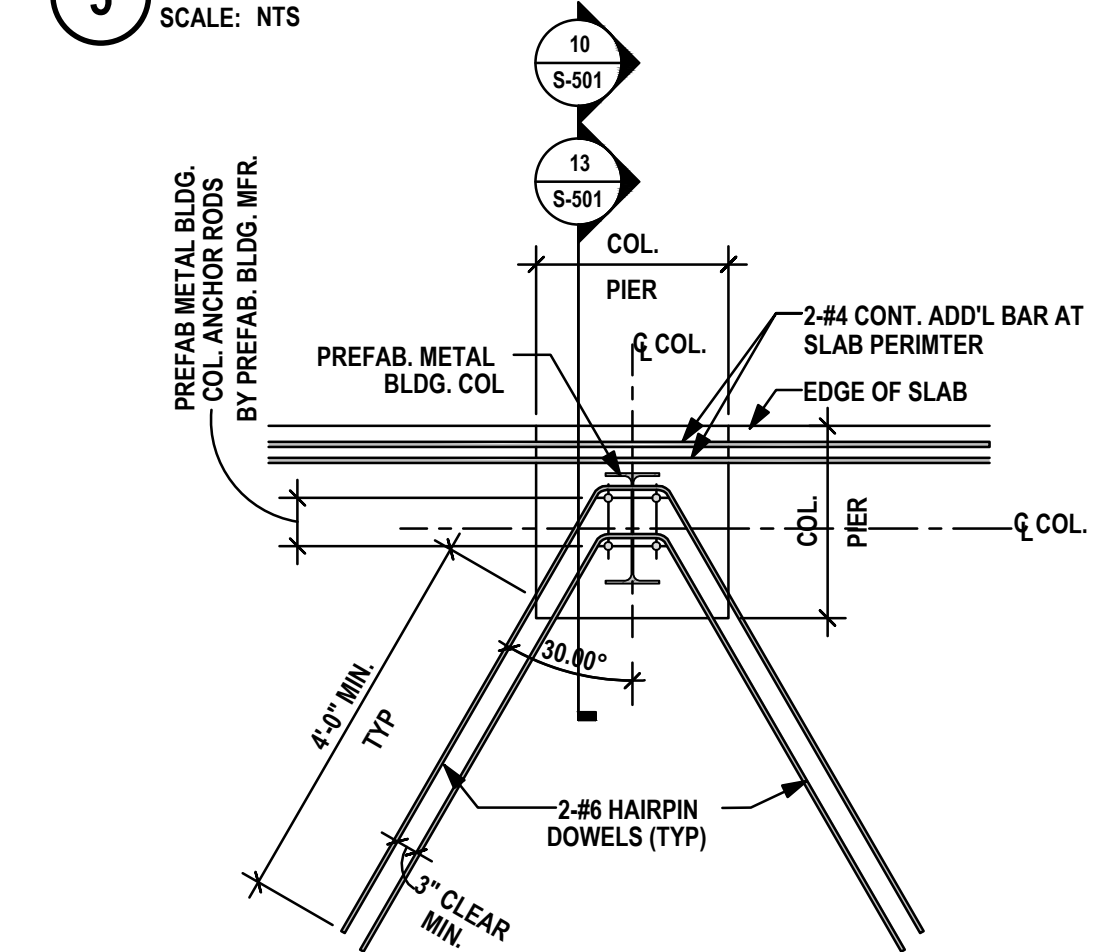
**5 TYPICAL EXTERIOR SLAB TIE INTO EXISTING**  
SCALE: NTS



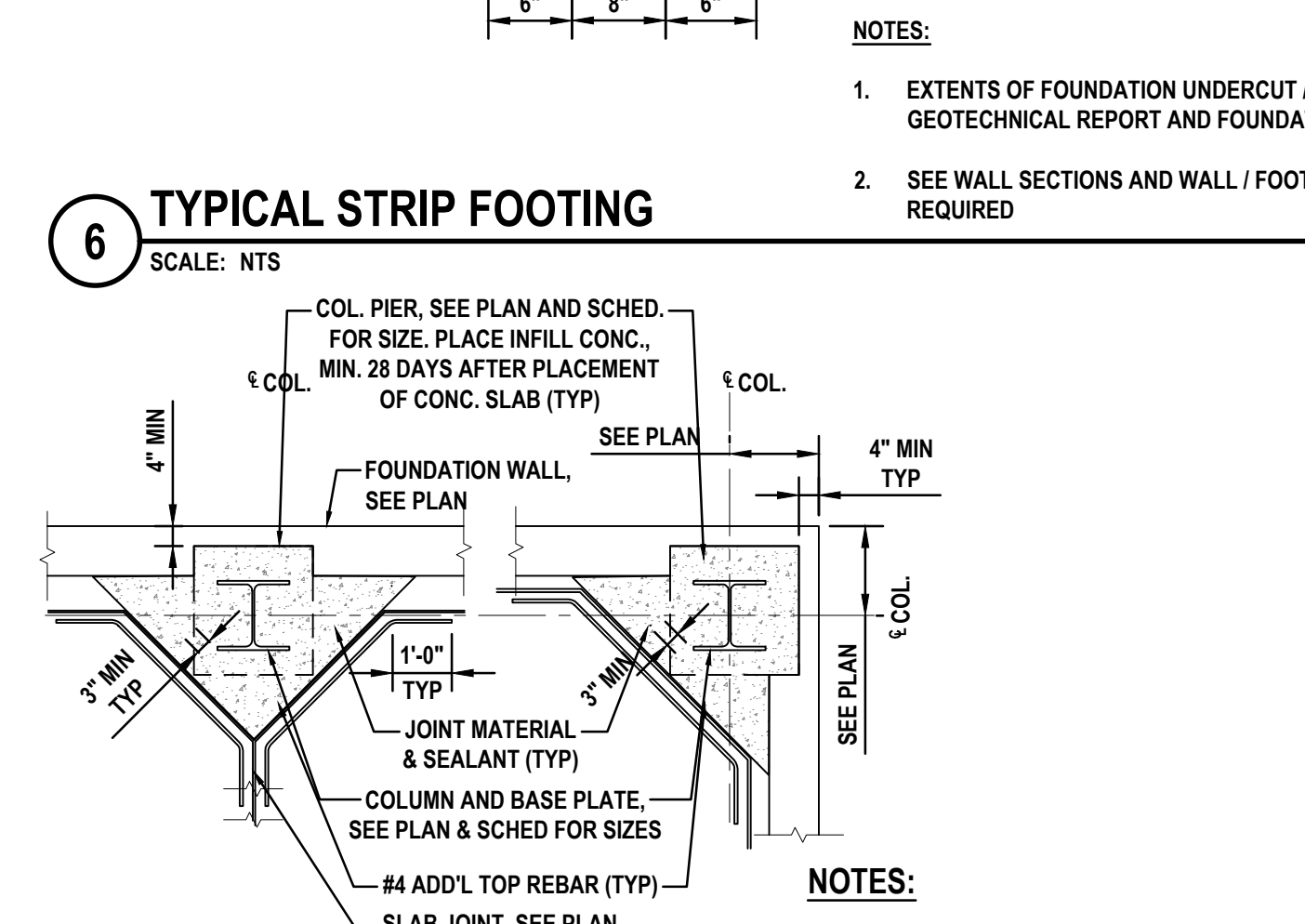
**6 TYPICAL STRIP FOOTING**  
SCALE: NTS



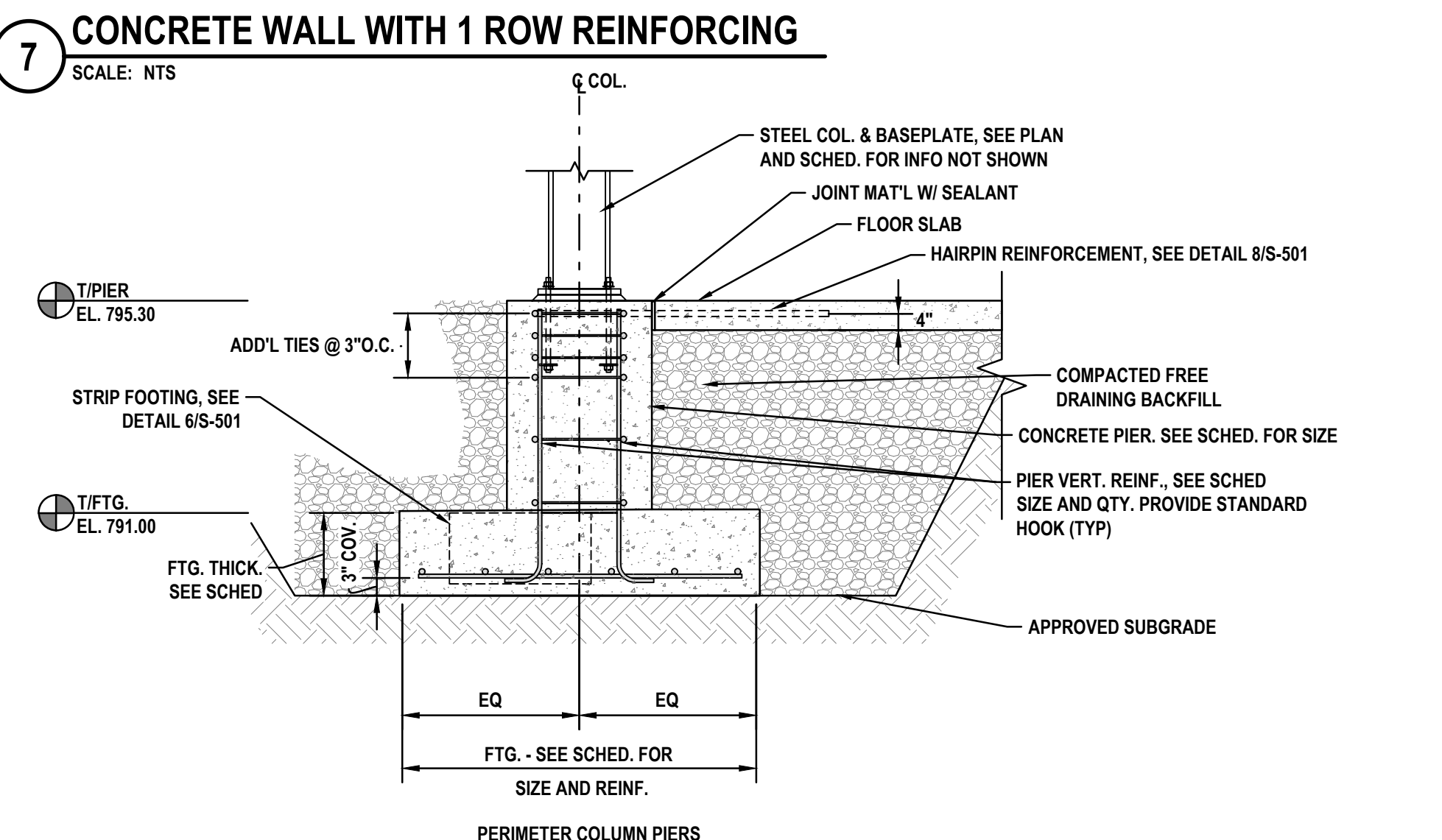
**7 CONCRETE WALL WITH 1 ROW REINFORCING**  
SCALE: NTS



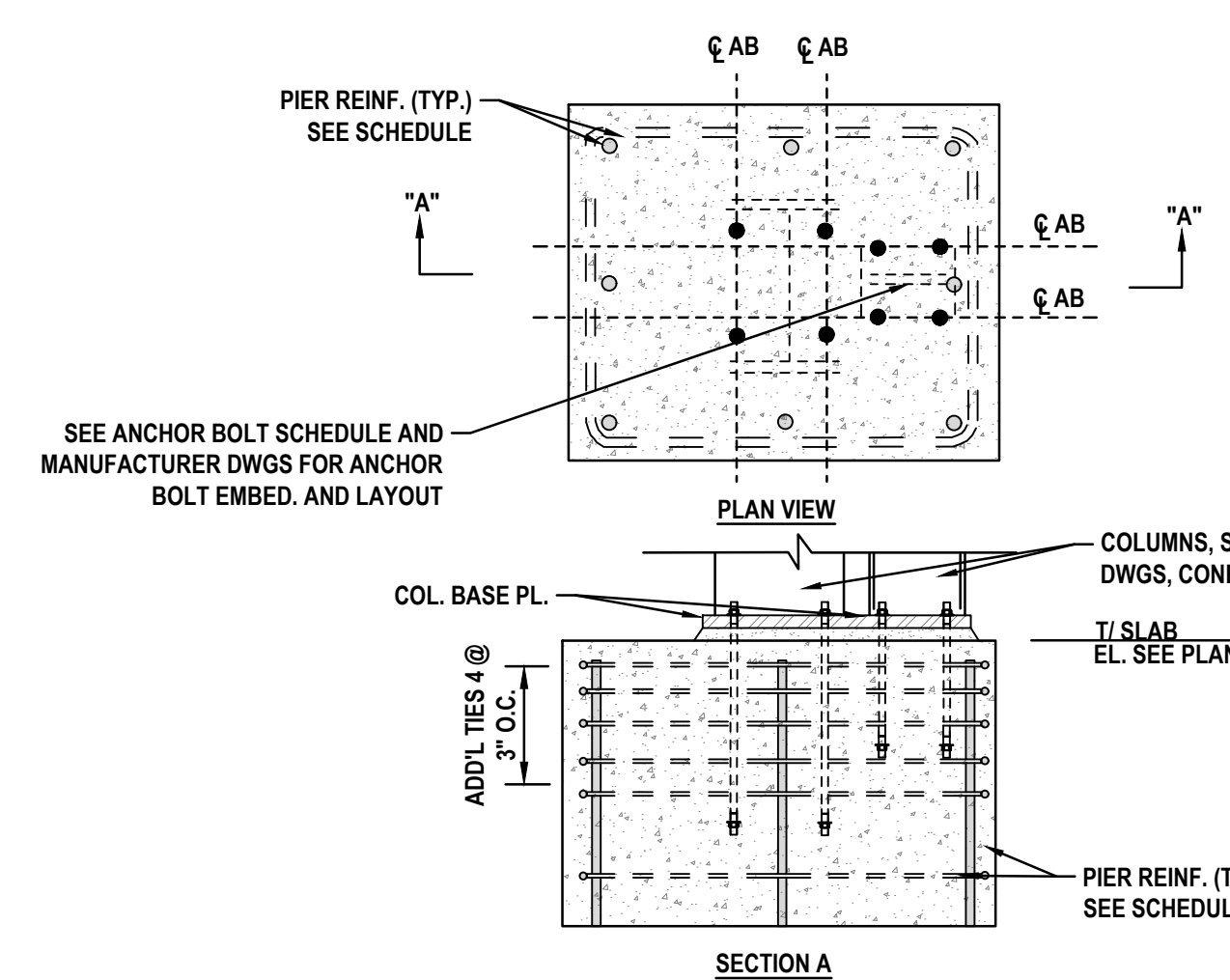
**8 TYPICAL HAIRPIN DETAIL**  
SCALE: NTS



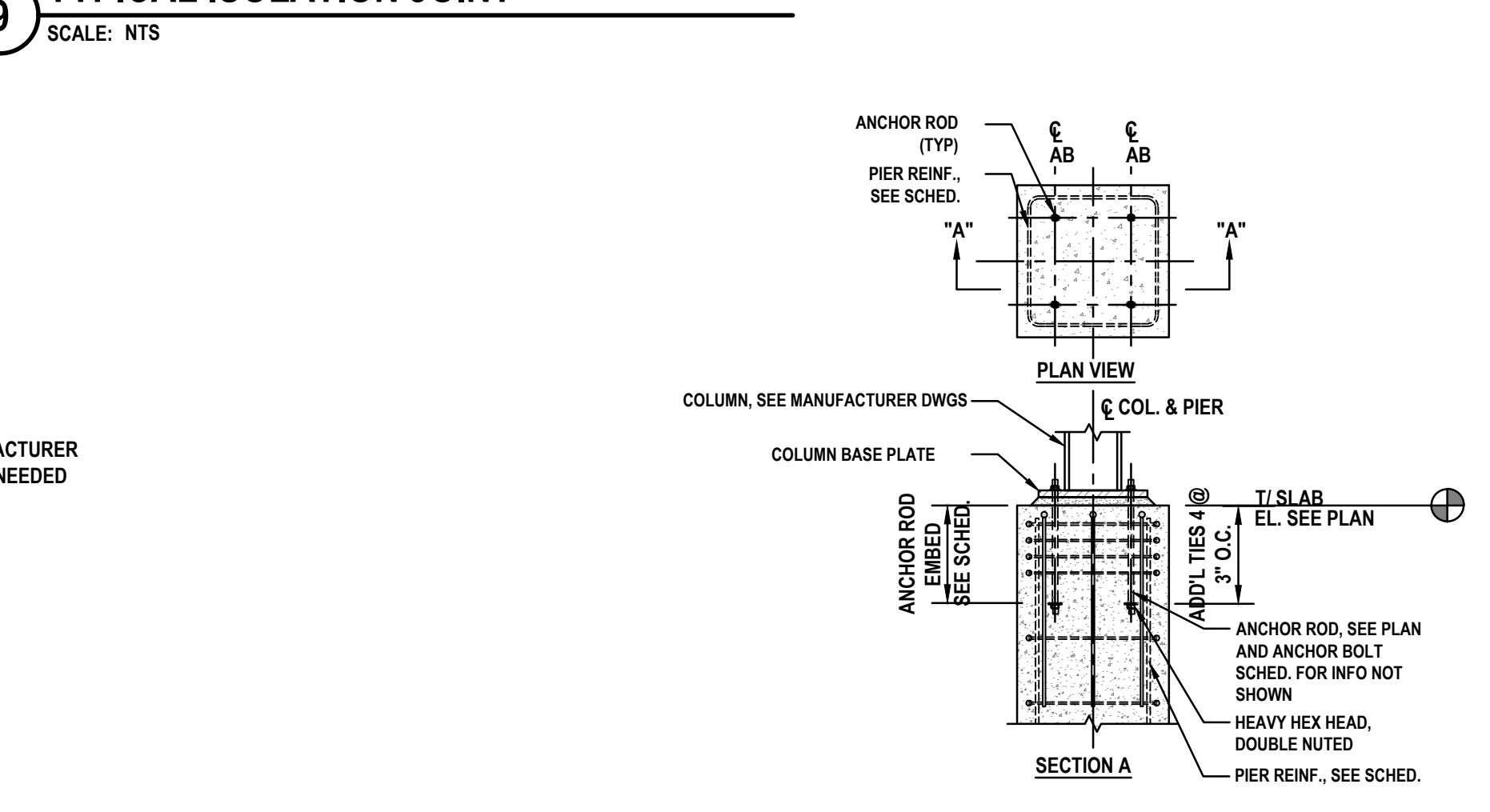
**9 TYPICAL ISOLATION JOINT**  
SCALE: NTS



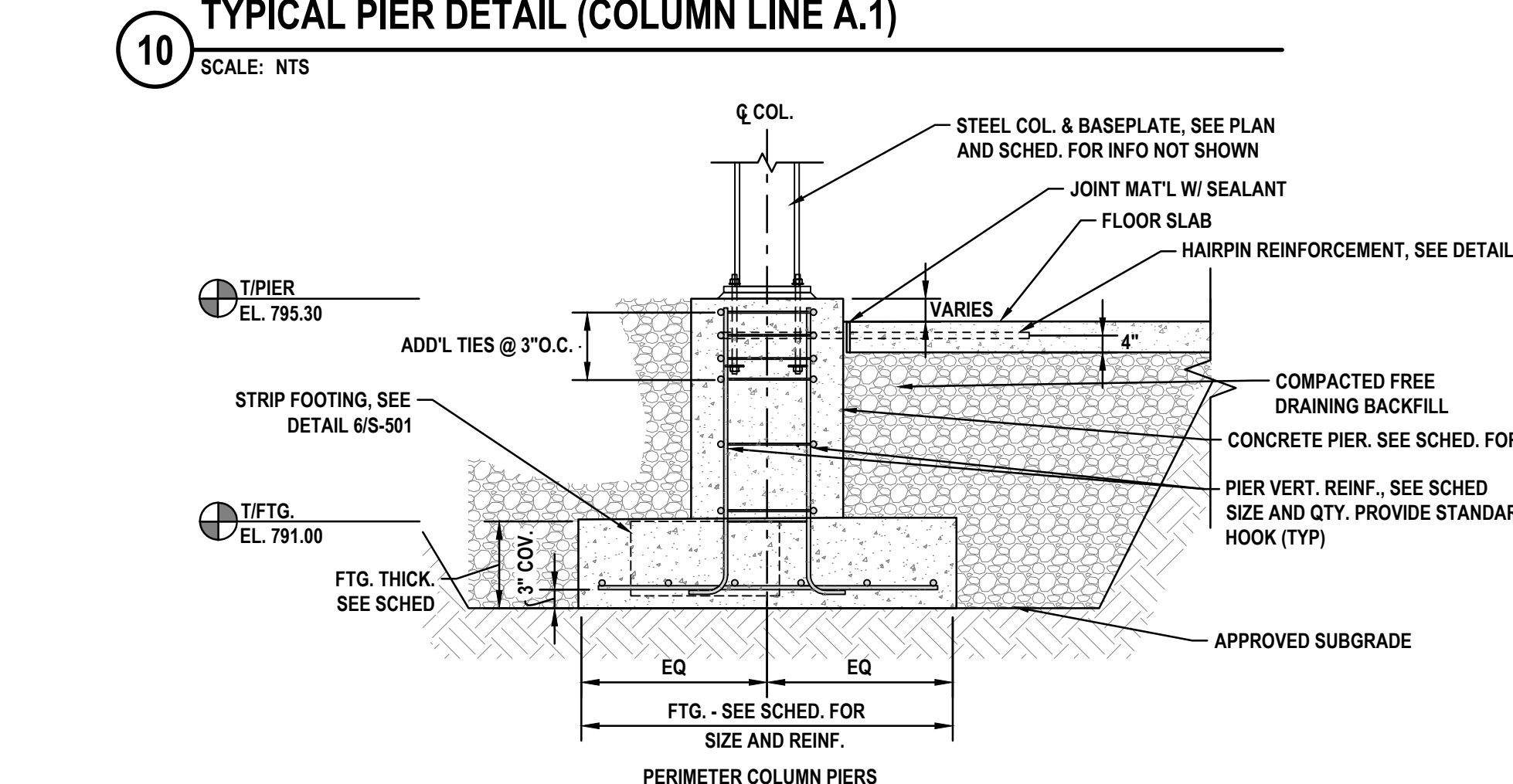
**10 TYPICAL PIER DETAIL (COLUMN LINE A.1)**  
SCALE: NTS



**11 P-1 & P-3 REINFORCING DETAIL**  
SCALE: NTS



**12 P-2 REINFORCING DETAIL**  
SCALE: NTS



**13 TYPICAL PIER DETAIL (COLUMN LINE C.9)**  
SCALE: NTS

**NUSSBAUMER & CLARKE, INC.**  
ENGINEERS AND SURVEYORS  
EST. 1933  
3556 Lake Shore Road, Suite 500 | Buffalo, NY 14219  
(716) 827-8000 | (716) 826-7938 fax  
www.nussclarke.com

**DPW GARAGE**  
**VILLAGE OF HAMBURG**  
425 PLEASANT AVE., HAMBURG, NY 14075  
**STRUCTURAL DETAILS**

ISSUED		
No.	DESCRIPTION	DATE
0	AS ADVERTISED FOR BIDS	04/21/26

NUSSBAUMER & CLARKE, INC.  
A CORPORATION REGISTERED TO PRACTICE  
PROFESSIONAL ENGINEERING & LAND SURVEYING IN  
THE STATE OF NEW YORK  
CERTIFICATE NO. 027

UNAUTHORIZED ALTERATION OR ADDITION TO THIS  
ENGINEERING DRAWING IS A VIOLATION OF  
SECTION 7209, PROVISION 2 OF THE NEW YORK STATE  
EDUCATION LAW.

PROJECT NUMBER	24J1-0104
DATE	APRIL 2026
DRAWN BY	ADM
DESIGNED BY	MRM
CHECKED BY	CMA
APPROVED BY	DMB
SCALE:	NTS
= 1 INCH	
SHEET No.	7 OF 7
<b>S-501</b>	

I:\2024\0104 Hamburg (V) - Cold Storage\B-CAD-gis\AutoCAD\Discipline\S-Structural\IS-501 STRUCTURAL DETAILS.dwg 3/31/2026 AMACKENZIE