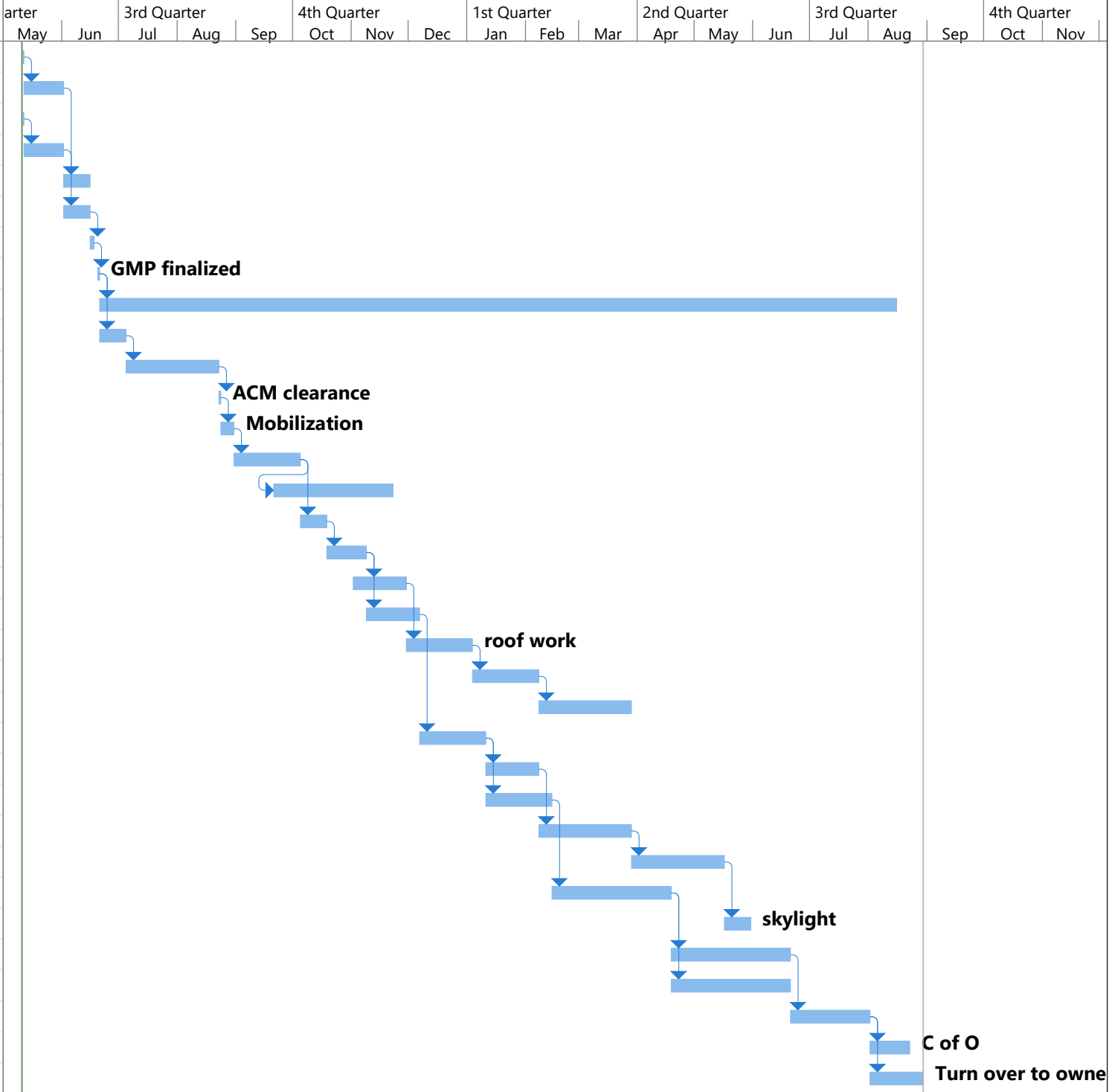


ID	Task Name	Duration	Start	Finish	Timeline																							
					arter	May	Jun	3rd Quarter			4th Quarter			1st Quarter			2nd Quarter			3rd Quarter			4th Quarter					
					May	Jun	Jul	Aug	Sep	Oct	Nov	Dec	Jan	Feb	Mar	Apr	May	Jun	Jul	Aug	Sep	Oct	Nov					
1	MEP/FP Bid packages complete	1 day	Wed 5/11/22	Wed 5/11/22																								
2	MEP/FP bid time	15 days	Thu 5/12/22	Wed 6/1/22																								
3	Interior and shell bid package complete	1 day	Wed 5/11/22	Wed 5/11/22																								
4	Interior and shell bid time	15 days	Thu 5/12/22	Wed 6/1/22																								
5	MEP/FP leveling	10 days	Thu 6/2/22	Wed 6/15/22																								
6	Interior and shell Leveling	10 days	Thu 6/2/22	Wed 6/15/22																								
7	Finalize GMP	2 days	Thu 6/16/22	Fri 6/17/22																								
8	GMP established	1 day	Mon 6/20/22	Mon 6/20/22																								
9	Construction	301 days	Tue 6/21/22	Tue 8/15/23																								
10	DOL notification and mobilization	10 days	Tue 6/21/22	Mon 7/4/22																								
11	Demolition and abatement	35 days	Tue 7/5/22	Mon 8/22/22																								
12	ACM clearance	1 day	Tue 8/23/22	Tue 8/23/22																								
13	Construction mobilization	5 days	Wed 8/24/22	Tue 8/30/22																								
14	Structural steel reinforcing	25 days	Wed 8/31/22	Tue 10/4/22																								
15	Foundation and masonry shaft work	45 days	Wed 9/21/22	Tue 11/22/22																								
16	Temp protection complete	10 days	Wed 10/5/22	Tue 10/18/22																								
17	MEP/FP rough layout in 1st floor (prior to metal stud)	15 days	Wed 10/19/22	Tue 11/8/22																								
18	Metal stud framing and track 1st floor	20 days	Wed 11/2/22	Tue 11/29/22																								
19	MEP/FP rough in 1st floor (continue)	20 days	Wed 11/9/22	Tue 12/6/22																								
20	Remove and replace roof (as weather permits)	25 days	Wed 11/30/22	Tue 1/3/23																								
21	Drywall first floor	25 days	Wed 1/4/23	Tue 2/7/23																								
22	finishes first floor (NO flooring)	35 days	Wed 2/8/23	Tue 3/28/23																								
23	MEP/FP rough layout in 2nd floor (prior to metal stud)	25 days	Wed 12/7/22	Tue 1/10/23																								
24	Metal stud framing and track 2nd floor	20 days	Wed 1/11/23	Tue 2/7/23																								
25	MEP/FP rough in 2nd floor (continue)	25 days	Wed 1/11/23	Tue 2/14/23																								
26	Drywall second floor	35 days	Wed 2/8/23	Tue 3/28/23																								
27	Finishes second (no flooring)	35 days	Wed 3/29/23	Tue 5/16/23																								
28	MEP/FP and kitchen equipment	45 days	Wed 2/15/23	Tue 4/18/23																								
29	Installation of skylight	10 days	Wed 5/17/23	Tue 5/30/23																								
30	Building finishes	45 days	Wed 4/19/23	Tue 6/20/23																								
31	Exterior restoration	45 days	Wed 4/19/23	Tue 6/20/23																								
32	MEP equipment balancing and testing	30 days	Wed 6/21/23	Tue 8/1/23																								
33	Certificate of Occupancy- final inspections	15 days	Wed 8/2/23	Tue 8/22/23																								
34	punch list	20 days	Wed 8/2/23	Tue 8/29/23																								



Project: preliminary schedule fo Date: Wed 5/11/22	Task		Project Summary		Manual Task		Start-only		Deadline	
	Split		Inactive Task		Duration-only		Finish-only		Progress	
	Milestone		Inactive Milestone		Manual Summary Rollup		External Tasks		Manual Progress	
	Summary		Inactive Summary		Manual Summary		External Milestone			