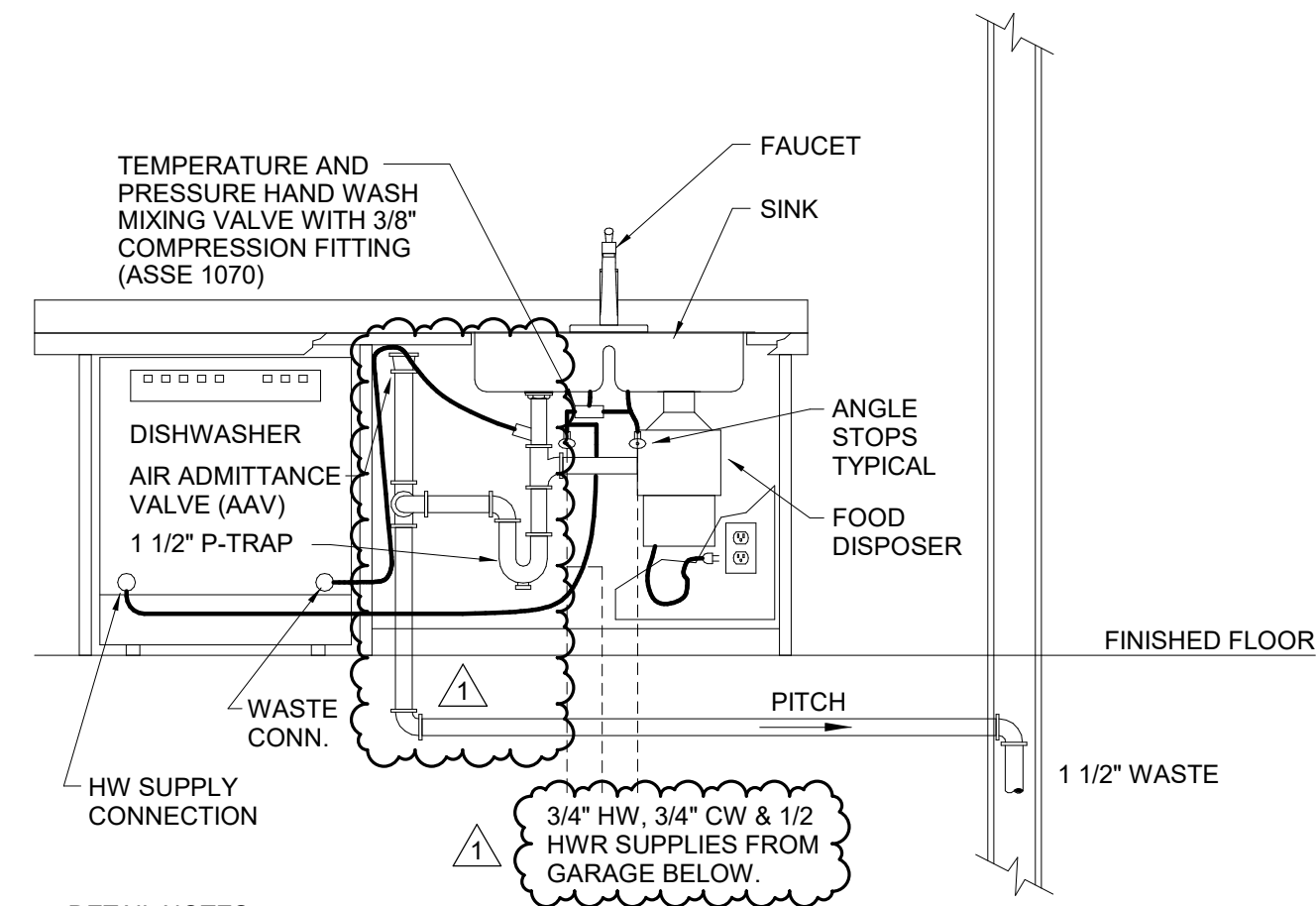


All Rights Reserved. Reuse of these documents without the expressed written permission of Carmina Wood Morris, DPC is prohibited. WARNING: It is a violation of article 145 of the New York State Education Law for any person to reproduce, copy, distribute, sell, lease, loan, rent, give, or otherwise make available any part of these documents or to alter this drawing. If altered such R.A., P.E. or L.L.S. shall affix his or her seal, signature, the date the revision, altered By, and a specific description of the alteration.

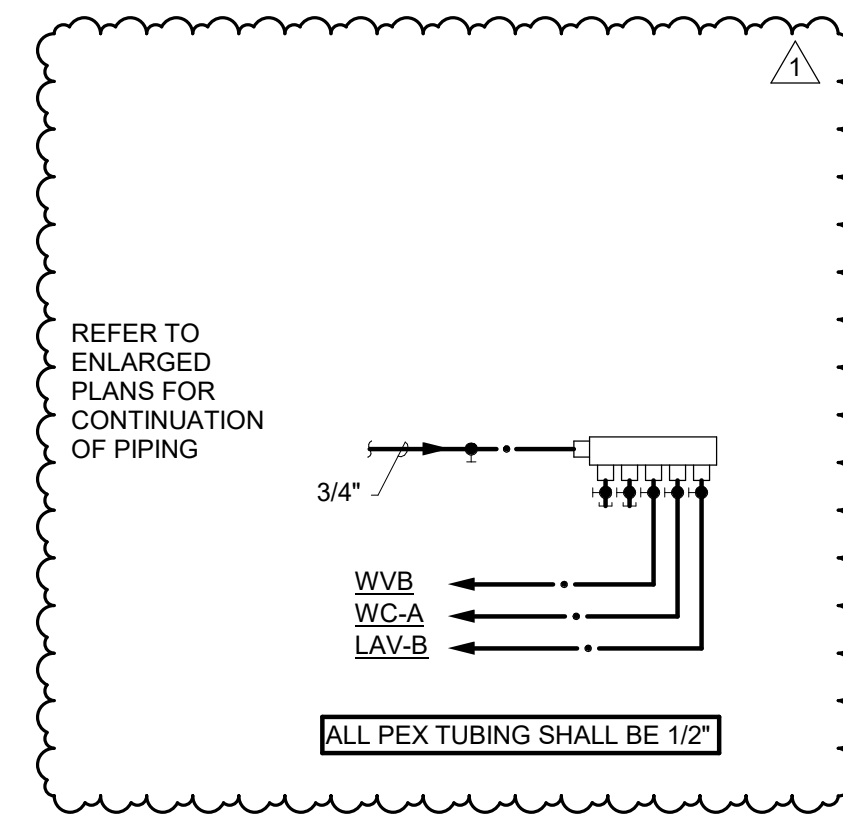
© Carmina Wood Morris DPC

2/6/2019 4:23:08 PM

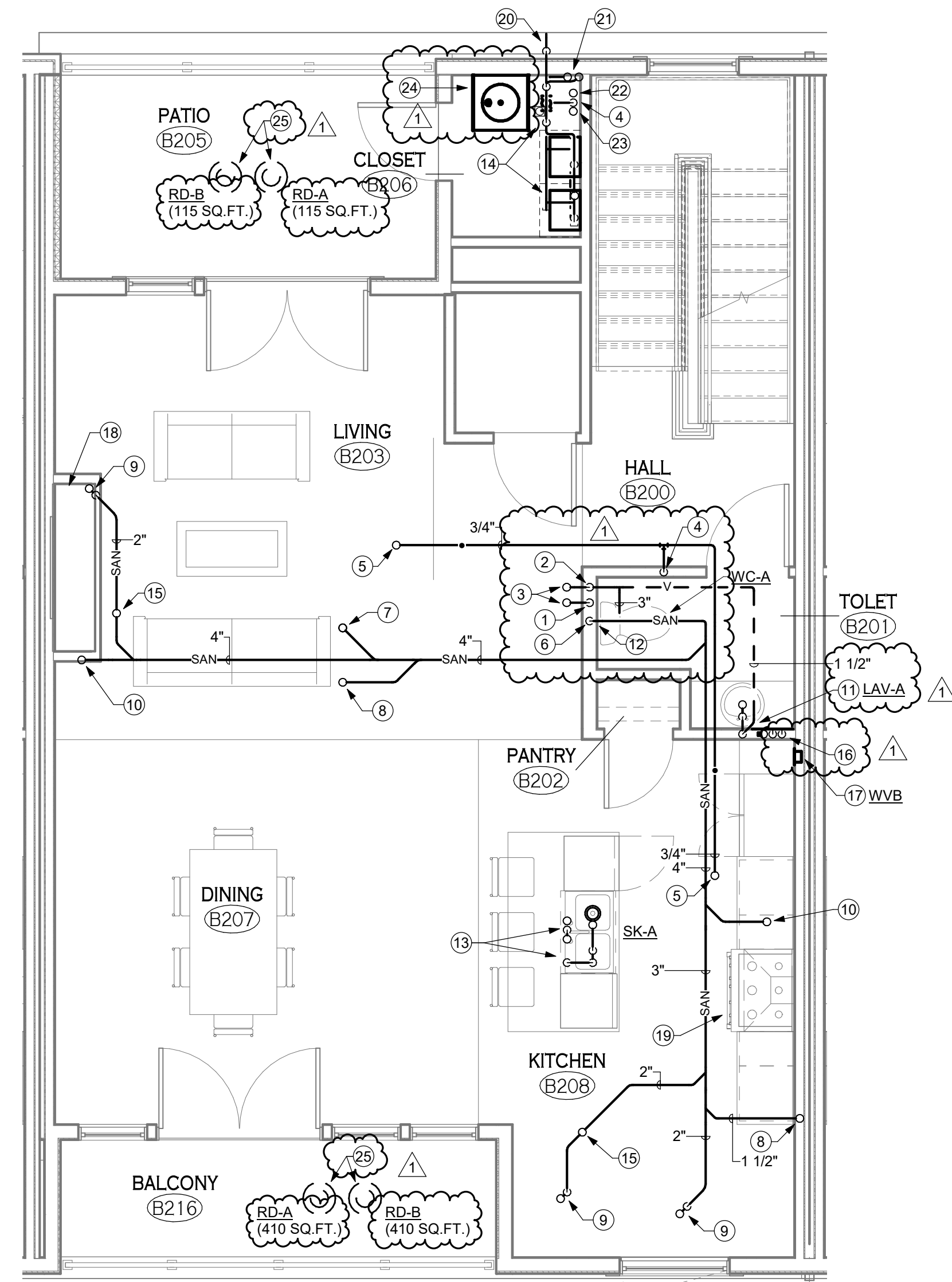


- DETAIL NOTES:**
- A. SEE SPECIFICATIONS FOR FIXTURES, EQUIPMENT AND ACCESSORIES, I.E. FAUCET SPRAY, SINK BOWL QUANTITY, DISPOSER, DISHWASHER . . .
  - B. DISHWASHER DRAIN HOSE - RUN HOSE UP & ATTACH TO UNDERSIDE OF COUNTER. CONNECT TO SINK TAILPIECE BEFORE TRAP AS SHOWN OR TO DISHWASHER INLET FITTING ON FOOD DISPOSER.
  - C. TWO BOWL SINKS SHALL BE INSTALLED USING END OUTLET CONTINUOUS WASTE PIPING AS SHOWN. DO NOT PROVIDE CENTER DRAIN OR BAFFLED WASTE PIPING.
  - D. MIXING VALVE SHALL BE ADJUSTED TO DELIVER TEMPERED WATER AT 105°F.
  - E. PROVIDE INSULATION ON SANITARY AND VENT PIPING IN CEILING ABOVE GARAGE.

**2** ISLAND SINK WITH FOOD DISPOSER DETAIL  
P-101 1/8" = 1'-0"



**3** SECOND FLOOR PEX MANIFOLD SCHEMATIC  
P-101 1/8" = 1'-0"



**1** 4 UNIT - LEVEL 2 - PLUMBING  
P-101 1/4" = 1'-0"

SOME UNITS ARE OPPOSITE HAND

**P-101 DRAWING NOTES**

- 1 4" SANITARY STACK FROM BELOW
- 2 3" VENT STACK FROM BELOW
- 3 4" SANITARY STACK AND 3" VENT STACK UP.
- 4 1" CW FROM BELOW.
- 5 3/4" CW UP.
- 6 4" SANITARY DOWN WITHIN WALL; CONNECT TO 4" STACK.
- 7 2" SANITARY FROM LAUNDRY UTILITY BOX ABOVE. SEE DETAIL 2/P-102.
- 8 1 1/2" SANITARY FROM ABOVE SERVING TWO LAVATORIES.
- 9 2" SANITARY P-TRAP FROM SHOWER/BATH TUB ABOVE.
- 10 4" SANITARY FROM WATER CLOSET ABOVE.
- 11 1/2" SANITARY DOWN FROM LAVATORY; 1/2" VENT UP.
- 12 3" VENT FROM BELOW SERVING WATER CLOSET.
- 13 3/4" CW, 3/4" HW UP, 1/2" HWR, 1/2" SANITARY AND 1 1/2" VENT DOWN FROM ISLAND SINK WITH FOOD DISPOSER. REFER TO DETAIL 2/P-101 FOR PIPING SCHEMATIC.
- 14 DUPLEX WATER HEATER ASSEMBLY WITH EXPANSION TANK AND HOT WATER RECIRCULATION PUMP. SEE DETAIL 1/P-501.
- 15 1" VENT UP.
- 16 3/4" CW TO PEX MANIFOLD, 1/2" HW TO LAVATORY, 1/2" HWR LAVATORY WATER VALVE BOX FOR REFRIGERATOR. SEE DETAIL 6/P-501.
- 18 PROVIDE 1/2" GAS CONNECTION TO FURNACE (46 CFH). SEE DETAIL 5/P-501.
- 19 PROVIDE 1/2" GAS CONNECTION TO RANGETOP (18 CFH) AND 1 1/4" GAS CONNECTION TO OVEN (142 CFH). SEE DETAIL 5/P-501.
- 20 4" WATER HEATER INTAKE AND EXHAUST STACKED. SEE DETAIL 1/P-501.
- 21 3/4" HW AND 3/4" HWR RISERS.
- 22 4" PRIMARY STORM CONDUIT FROM ABOVE. REFER TO ARCHITECT FOR ROOF DRAIN.
- 23 1" VENT STACK UP.
- 24 14 GALLON EXPANSION TANK WITH WALL-MOUNTED EQUIPMENT PLATFORM; MOUNT AS HIGH AS POSSIBLE. SEE DETAIL 1/P-501.
- 25 3" PRIMARY AND SECONDARY ROOF DRAINS INSTALLED UNDER PAVERS. REFER TO ARCHITECTURAL DRAWING A-602 FOR INSTALLATION INFORMATION.

**PLUMBING GENERAL NOTES**

- A. REFER TO DRAWING P-701 FOR PLUMBING RISER DIAGRAMS AND PIPING INSTALLATION SCHEMATICS.
- B. REFER TO DRAWING P-103 FOR STORM CONDUIT/PIPING DIAGRAMS AND PIPING INSTALLATION SCHEMATICS.



REVISIONS:		No.	Description	Date
		1	Addendum 1	02/08/19

**PROJECT NAME:**  
New Construction:  
**The West End**  
240-260 Lakefront Blvd  
Buffalo Ny, 14202

Issued for Permit: 01.23.2019  
Drawn By: DMS2  
Checked By: RKS

**DRAWING NAME:**  
Second Floor  
Plan - Plumbing

**DRAWING NO.:**  
**P-101**  
Project No: 18.122