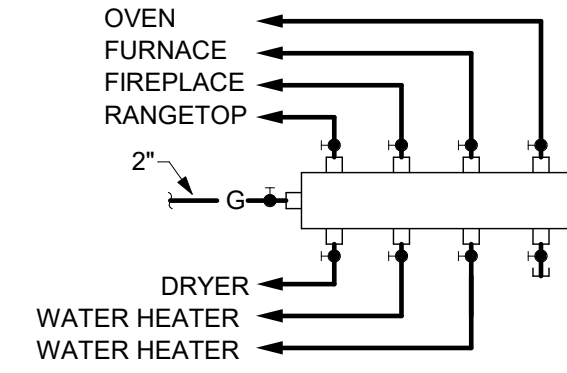
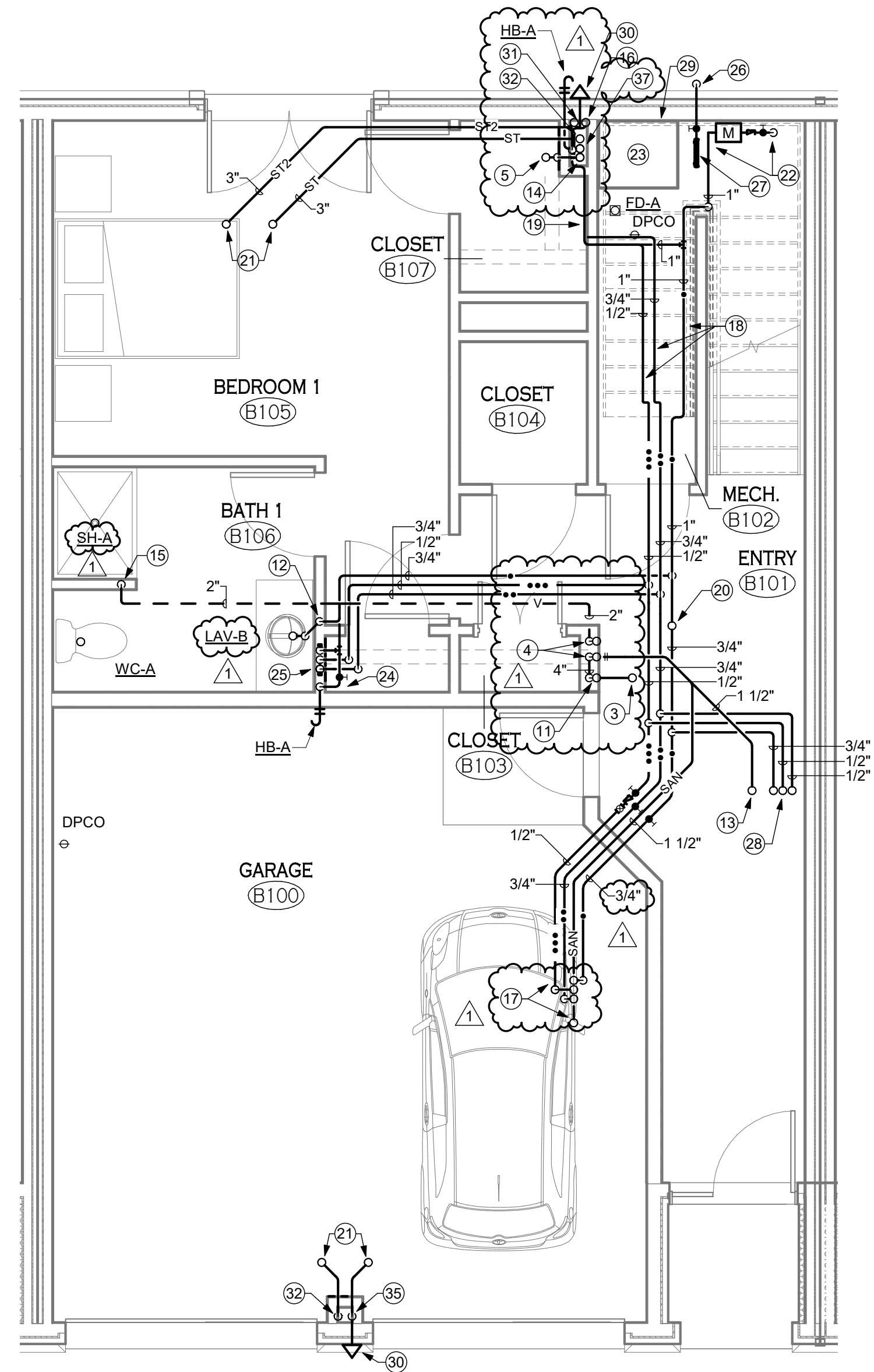


4 FIRST FLOOR PEX MANIFOLD SCHEMATIC
P-100 1/8" = 1'-0"



SIZE PIPING AS PER EQUIVALENT DIAMETER INDICATED ON GAS FIRED APPLIANCE SCHEDULE ON DRAWING P-501

3 NATURAL GAS DISTRIBUTION SCHEMATIC
P-100 1/8" = 1'-0"



2 4 UNIT - LEVEL 1 - PLUMBING
P-100 1/4" = 1'-0"

SOME UNITS ARE OPPOSITE HAND

P-100 GENERAL NOTES

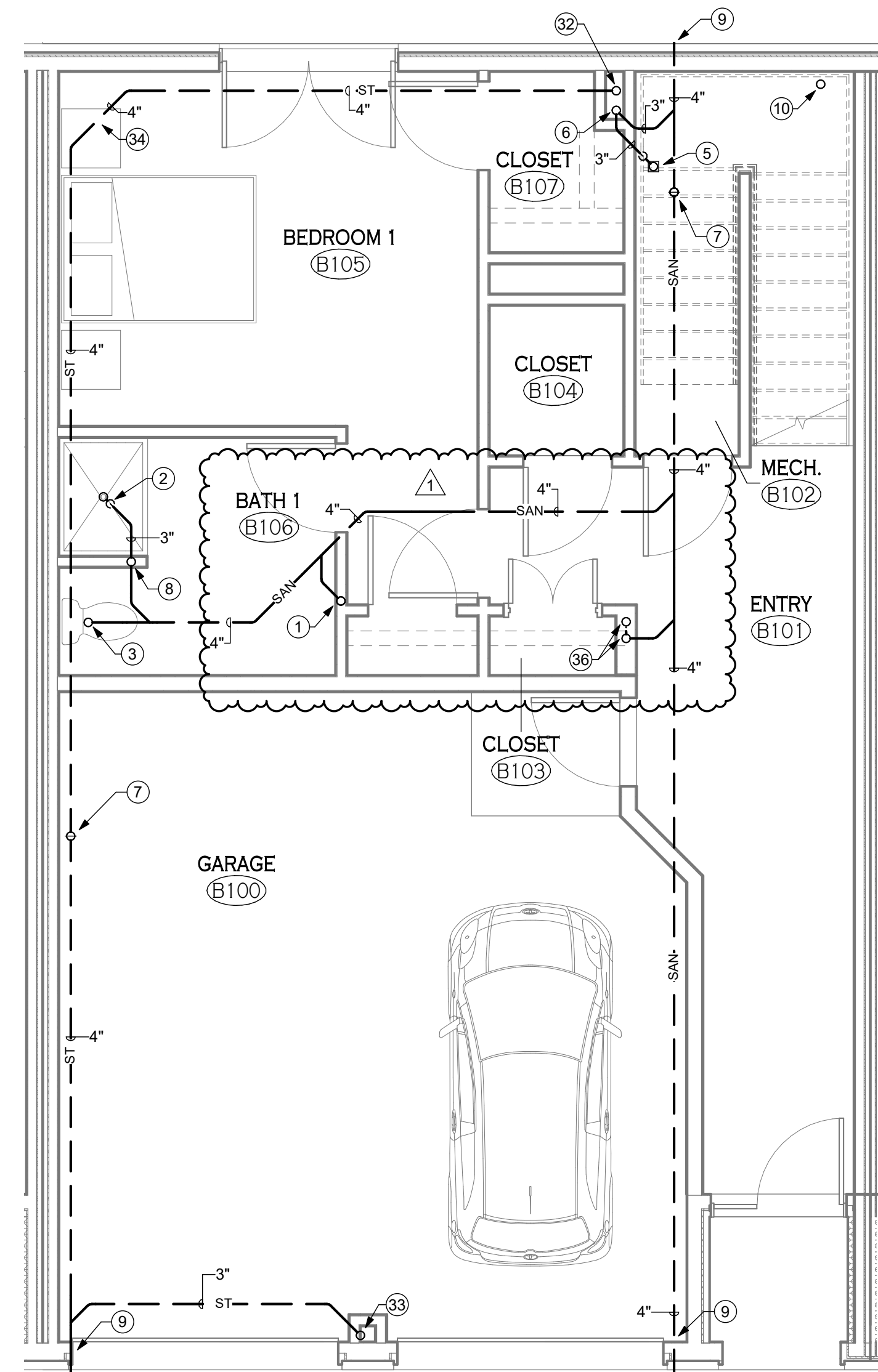
- A. REFER TO DRAWING P-701 FOR PLUMBING RISER DIAGRAMS AND PIPING INSTALLATION SCHEMATICS; REFER TO DRAWING P-103 FOR STORM CONDUCTOR/PIPING DIAGRAMS AND PIPING INSTALLATION SCHEMATICS.
- B. INCLUDE A NEW 2-1/2" NATURAL GAS PIPING MAIN TO SERVE EACH INDIVIDUAL TOWN HOUSE. THE 2-1/2" NATURAL GAS PIPING SHALL BE CONSTRUCTED OF PE2406 POLYETHYLENE PIPING, YELLOW, IN ACCORDANCE WITH NATIONAL FUEL GAS STANDARDS. THE UNDERGROUND PIPING SHALL ORIGINATE AT THE METER BANK SERVING EACH HOUSING COMPLEX AS NOTED ON DRAWING C-400. THE PIPING SHALL THEN TRAVEL PARALLEL TO THE PROPERTY LINE AS DEPICTED ON DRAWING C-400. CONTRACTOR SHALL EXCAVATE SITE AS REQUIRED TO INSTALL NEW PIPING AND EQUIPMENT. UPON COMPLETION OF CONSTRUCTION THE CONTRACTOR SHALL RESTORE SITE TO MATCH EXISTING CONDITIONS UTILIZING LIKE MATERIALS. THE CONTRACTOR SHALL PAY ALL COSTS ASSOCIATED FOR METER BANK AND PIPING INSTALLATION; COORDINATE ALL COSTS WITH NATIONAL FUEL GAS CORPORATION.

P-100 DRAWING NOTES

- 1 3" SANITARY FROM LAVATORY ABOVE.
- 2 3" SANITARY P-TRAP FROM SHOWER DRAIN ABOVE.
- 3 SANITARY FROM WATER CLOSET.
- 4 4" SANITARY STACK AND 3" VENT STACK UP. OFFSET PIPING TO REMAIN ENCLOSED IN WALL ABOVE.
- 5 3" SANITARY P-TRAP FROM FLOOR DRAIN ABOVE.
- 6 3" SANITARY STACK FROM ABOVE.
- 7 4" FROM DECK PLATE CLEANOUT.
- 8 1 1/2" VENT UP.
- 9 SEE SITE PLAN FOR CONTINUATION.
- 10 WATER SERVICE UP, SEE DETAIL 4/P-501.
- 11 4" SANITARY DOWN; 3" VENT UP. OFFSET PIPING TO REMAIN IN WALL. CONNECT TO 4" STACK.
- 12 1 1/2" SANITARY FROM LAVATORY TO 3" BELOW SUB; 1 1/2" VENT UP.
- 13 1 1/2" SANITARY FROM LAVATORY ABOVE.
- 14 3" SANITARY STACK DOWN; 3" VENT STACK UP.
- 15 1 1/2" VENT FROM BELOW.
- 16 1/2" HW DOWN; 1/2" HWR UP.
- 17 1 1/2" SANITARY, 1 1/2" VENT AND 1/2" HWR FROM KITCHEN SINK; 3/4" CW AND 3/4" HW UP. SEE DETAIL 2/P-101.
- 18 SLOPE PIPING AS REQUIRED TO FOLLOW SLOPE OF STAIRS. COORDINATE WITH DIVISION 23.

P-100 DRAWING NOTES

- 19 1" CW AND 1/2" HWR UP; 3/4" HW DOWN FROM WATER HEATERS ABOVE. RUN PIPING ALONG WALL AT A LOW ELEVATION TO COORDINATE WITH DIVISION 23.
- 20 1" CW UP TO LEVEL ABOVE.
- 21 3" PRIMARY AND SECONDARY STORM PIPING FROM ROOF DRAINS INSTALLED UNDER PAVERS ABOVE. REFER TO ARCHITECTURAL PLANS FOR MORE INFORMATION.
- 22 1" WATER SERVICE. SEE DETAIL 4/P-501. SEE SITE UTILITY PLAN C-400 FOR LOCATION.
- 23 FURNACE AND ASSOCIATED EQUIPMENT. SEE DIVISION 26.
- 24 3/4" CW DOWN TO HOSE BIBB.
- 25 3/4" CW, 3/4" HW DOWN TO AND 1/2" HWR UP FROM PEX MANIFOLD IN WALL SERVING BATHROOM FIXTURES. PROVIDE 18"x18" ACCESS PANEL. SEE DETAIL 6/P-501 AND DETAIL 4 ON THIS SHEET.
- 26 2" GAS SERVICE FOR THIS UNIT. REFER TO SITE PLAN C-400 FOR LOCATION.
- 27 GAS CSST MANIFOLD - EXTEND INDIVIDUAL CSST BRANCH FROM MANIFOLD TO EACH GAS-FIRED APPLIANCE. REFER TO DETAIL 3 ON THIS SHEET FOR PIPING SCHEMATIC.
- 28 3/4" CW, 1/2" HW UP; 1/2" HWR FROM ABOVE.
- 29 PROVIDE 1 1/4" GAS CONNECTION TO FURNACE (100 CFH) PROVIDED BY DIVISION 23. SEE DETAIL 5/P-501.
- 30 TERMINATE SECONDARY STORM PIPING 1' 6" ABOVE GRADE WITH DOWNSPOUT NOZZLE.
- 31 3" SECONDARY STORM PIPING DOWN. DROP BELOW HWR AND HW RISERS.
- 32 3/4" PRIMARY STORM CONDUCTOR FROM ABOVE. REFER TO ARCHITECT FOR ROOF DRAIN.
- 33 3" PRIMARY STORM CONDUCTOR FROM ABOVE.
- 34 PROVIDE TWO(2) 1/8" BENDS AND 2' 0" LENGTH OF PIPING.
- 35 3" SECONDARY STORM PIPING DOWN.
- 36 4" SANITARY STACK UP; 3" VENT STACK UP FROM CONNECTION TO SANITARY STACK.
- 37 1" CW UP TO LEVEL ABOVE. 3/4" CW DOWN TO HOSE BIBB (HB-A). PROVIDE SHUT-OFF VALVE AND 8"x8" ACCESS PANEL IN DROP.



1 4 UNIT - FOUNDATION - PLUMBING
P-100 1/4" = 1'-0"

SOME UNITS ARE OPPOSITE HAND



PROFESSIONAL SEAL

REVISIONS:	No.	Description	Date
	1	Addendum 1	02/08/19

PROJECT NAME:
New Construction:
The West End
240-260 Lakefront Blvd
Buffalo Ny, 14202

Issued for Permit: 01.23.2019
Drawn By: DMS2
Checked By: RKS

DRAWING NAME:
First Floor Plan - Plumbing

DRAWING NO.:
P-100

Project No: 18.122

All Rights Reserved. Reuse of these documents without the expressed written permission of Carmina Wood Morris, DPC is prohibited. WARNING: It is a violation of article 145 of the New York State Education Law to reproduce or transmit any information contained herein for any purpose other than that for which it was originally prepared. The user of this drawing is advised that it is not to be used for any other purpose without the express written consent of the drafter.

© Carmina Wood Morris DPC

2/11/2019 12:17:02 PM